

For Research Use Only

PMM1 Polyclonal antibody

Catalog Number: 11252-2-AP **1 Publications**



Basic Information

Catalog Number: 11252-2-AP	GenBank Accession Number: BC016818	Purification Method: Antigen affinity purification
Size: 550 µg/ml	GeneID (NCBI): 5372	Recommended Dilutions: WB 1:500-1:1000 IHC 1:50-1:500
Source: Rabbit	UNIPROT ID: Q92871	
Isotype: IgG	Full Name: phosphomannomutase 1	
Immunogen Catalog Number: AG1782	Calculated MW: 29 kDa	
	Observed MW: 29 kDa	

Applications

Tested Applications: IHC, WB, ELISA	Positive Controls: WB : mouse brain tissue, human brain tissue, HepG2 cells, NIH/3T3 cells IHC : human liver cancer tissue, human lung cancer tissue
Cited Applications: WB	
Species Specificity: human, mouse, rat	
Cited Species: mouse	
Note-IHC: suggested antigen retrieval with TE buffer pH 9.0; (*) Alternatively, antigen retrieval may be performed with citrate buffer pH 6.0	

Background Information

PMM1, also named as PMMH22, belongs to the eukaryotic PMM family. It catalyzes the second step in the conversion of fructose-6P to GDP-mannose and is involved in the synthesis of the GDP-mannose and dolichol-phosphate-mannose required for a number of critical mannosyl transfer reactions. In addition, PMM1 may be responsible for the degradation of glucose-1,6-bisphosphate in ischemic brain (PMID:18927083).

Notable Publications

Author	Pubmed ID	Journal	Application
Wegrzynowicz Michal M	22191580	J Proteome Res	WB

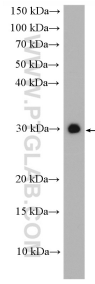
Storage

Storage:
Store at -20°C. Stable for one year after shipment.
Storage Buffer:
PBS with 0.02% sodium azide and 50% glycerol pH 7.3.
Aliquoting is unnecessary for -20°C storage

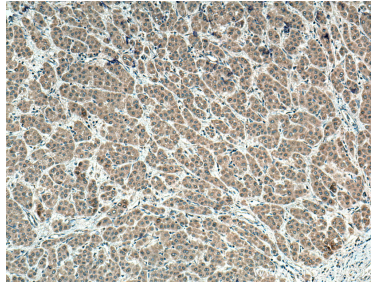
For technical support and original validation data for this product please contact:
T: 4006900926 E: Proteintech-CN@ptglab.com W: ptgcn.com

This product is exclusively available under Proteintech Group brand and is not available to purchase from any other manufacturer.

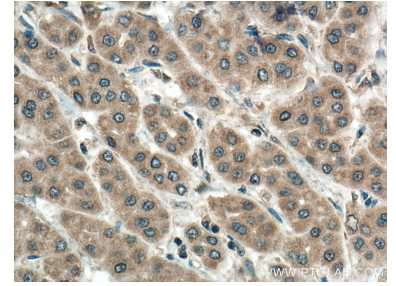
Selected Validation Data



mouse brain tissue were subjected to SDS PAGE followed by western blot with 11252-2-AP (PMM1 antibody) at dilution of 1:600 incubated at room temperature for 1.5 hours.



Immunohistochemical analysis of paraffin-embedded human liver cancer tissue slide using 11252-2-AP (PMM1 antibody) at dilution of 1:200 (under 10x lens). Heat mediated antigen retrieval with Tris-EDTA buffer (pH 9.0).



Immunohistochemical analysis of paraffin-embedded human liver cancer tissue slide using 11252-2-AP (PMM1 antibody) at dilution of 1:200 (under 40x lens). Heat mediated antigen retrieval with Tris-EDTA buffer (pH 9.0).