

For Research Use Only

SH3BGRL Polyclonal antibody

Catalog Number:11253-1-AP



Basic Information

Catalog Number: 11253-1-AP	GenBank Accession Number: BC016709	Purification Method: Antigen affinity purification
Size: 450 ug/ml	GeneID (NCBI): 6451	Recommended Dilutions: WB 1:500-1:1000 IHC 1:50-1:500
Source: Rabbit	UNIPROT ID: O75368	
Isotype: IgG	Full Name: SH3 domain binding glutamic acid-rich protein like	
Immunogen Catalog Number: AG1780	Calculated MW: 13 kDa	
	Observed MW: 13 kDa	

Applications

Tested Applications:

WB, IHC, ELISA

Species Specificity:

human, mouse

Note-IHC: suggested antigen retrieval with TE buffer pH 9.0; (*) Alternatively, antigen retrieval may be performed with citrate buffer pH 6.0

Positive Controls:

WB : mouse colon tissue, mouse uterus tissue

IHC : human intrahepatic cholangiocarcinoma tissue,

Background Information

SH3BGRL, an adaptor protein, is one member of the SH3BGR family. SH3BGRL is ubiquitously expressed in varied human tissues and organs, including the bone marrow, heart, lung, liver, and kidney. SH3BGRL encodes a small protein with a conserved proline-rich PLPPQIF region and two motifs, Homer EVH1-binding and SH3-binding motifs. As a scaffold protein, SH3BGRL could participate in the protein-protein interaction for the integration or/and crosstalk of signal transduction, membrane trafficking, cytoskeletal rearrangements, and other key cellular processes.

Storage

Storage:

Store at -20°C. Stable for one year after shipment.

Storage Buffer:

PBS with 0.02% sodium azide and 50% glycerol pH 7.3.

Aliquoting is unnecessary for -20°C storage

For technical support and original validation data for this product please contact:

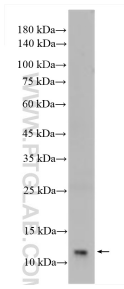
T: 4006900926

E: Proteintech-CN@ptglab.com

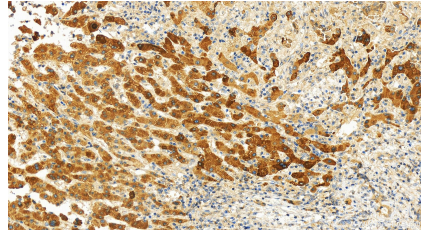
W: ptgcn.com

This product is exclusively available under Proteintech Group brand and is not available to purchase from any other manufacturer.

Selected Validation Data



mouse colon tissue were subjected to SDS PAGE followed by western blot with 11253-1-AP (SH3BGRL antibody) at dilution of 1:500 incubated at room temperature for 1.5 hours.



Immunohistochemical analysis of paraffin-embedded human intrahepatic cholangiocarcinoma tissue slide using 11253-1-AP (SH3BGRL antibody) at dilution of 1:50 (under 20x lens). Heat mediated antigen retrieval with Tris-EDTA buffer (pH 9.0).