

For Research Use Only

# LPXN Polyclonal antibody

Catalog Number: 11307-1-AP

Featured Product

2 Publications



## Basic Information

**Catalog Number:**

11307-1-AP

**Size:**

500 ug/ml

**Source:**

Rabbit

**Isotype:**

IgG

**Immunogen Catalog Number:**

AG1845

**GenBank Accession Number:**

BC019035

**GeneID (NCBI):**

9404

**UNIPROT ID:**

O60711

**Full Name:**

leupaxin

**Calculated MW:**

43 kDa

**Observed MW:**

45 kDa

**Purification Method:**

Antigen affinity purification

**Recommended Dilutions:**

WB 1:2000-1:10000

IP 0.5-4.0 ug for 1.0-3.0 mg of total protein lysate

IF/ICC 1:200-1:800

## Applications

**Tested Applications:**

WB, IF/ICC, IP, ELISA

**Cited Applications:**

IHC, IF

**Species Specificity:**

human

**Cited Species:**

mouse

**Positive Controls:**

WB : DU 145 cells, PC-3 cells

IP : PC-3 cells,

IF/ICC : PC-3 cells,

## Background Information

LPXN, also known as Leupaxin, LDPL, belongs to the paxillin family. LPXN contributes to the regulation of cell adhesion, spreading, and cell migration and acts as a negative regulator in integrin-mediated cell adhesion events (PMID: 20543562). LPXN has four leucine-rich LD-motifs in the N-terminus and four LIM domains in the C-terminus. It may function in cell type-specific signaling by associating with PYK2, a member of the focal adhesion kinase family (PMID: 9565592). Studies in breast cancer implicate LPXN is involved in the regulation of ER action as a co-factor (PMID: 25955236). LPXN is expressed in prostate cancer cells and its expression intensity is directly linked to PCA progression (PMID: 18451096).

## Notable Publications

Author	Pubmed ID	Journal	Application
Xinming Wang	34118218	J Mol Cell Cardiol	IF
Sun Chenchen	38625514	Mol Cell Biochem	IHC

## Storage

**Storage:**

Store at -20°C. Stable for one year after shipment.

**Storage Buffer:**

PBS with 0.02% sodium azide and 50% glycerol pH 7.3.

Aliquoting is unnecessary for -20°C storage

For technical support and original validation data for this product please contact:

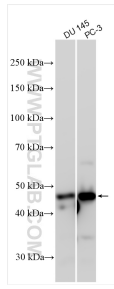
T: 4006900926

E: Proteintech-CN@ptglab.com

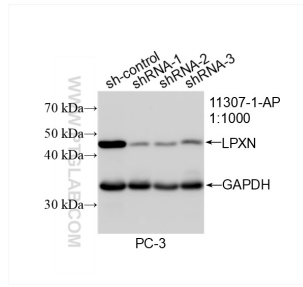
W: ptgcn.com

This product is exclusively available under Proteintech Group brand and is not available to purchase from any other manufacturer.

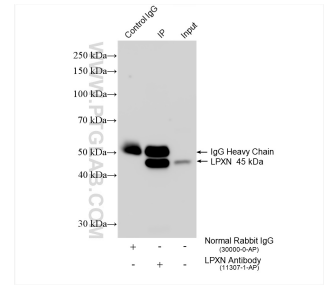
## Selected Validation Data



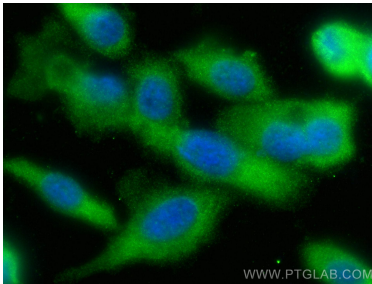
Various lysates were subjected to SDS PAGE followed by western blot with 11307-1-AP (LPXN antibody) at dilution of 1:5000 incubated at room temperature for 1.5 hours.



WB result of LPXN antibody (11307-1-AP; 1:1000; incubated at room temperature for 1.5 hours) with sh-Control and sh-LPXN transfected PC-3 cells.



IP result of anti-LPXN (IP:11307-1-AP, 4ug; Detection:11307-1-AP 1:5000) with PC-3 cells lysate 1575 ug.



Immunofluorescent analysis of (-20°C Ethanol) fixed PC-3 cells using LPXN antibody (11307-1-AP) at dilution of 1:400 and Multi-rAb CoraLite® Plus 488-Goat Anti-Rabbit Recombinant Secondary Antibody (H+L) (RGAR002).