

For Research Use Only

EHD4 Polyclonal antibody

Catalog Number: 11382-2-AP **4 Publications**



Basic Information

Catalog Number: 11382-2-AP	GenBank Accession Number: BC006287	Purification Method: Antigen affinity purification
Size: 650 ug/ml	GeneID (NCBI): 30844	Recommended Dilutions: WB 1:1000-1:8000 IHC 1:50-1:500 IF/ICC 1:10-1:100
Source: Rabbit	UNIPROT ID: Q9H223	
Isotype: IgG	Full Name: EH-domain containing 4	
Immunogen Catalog Number: AG1942	Calculated MW: 541 aa, 61 kDa	
	Observed MW: 61 kDa	

Applications

Tested Applications:
WB, IHC, IF/ICC, ELISA

Cited Applications:
WB, IHC

Species Specificity:
human, mouse, rat

Cited Species:
human, mouse

Note-IHC: suggested antigen retrieval with TE buffer pH 9.0; (*) Alternatively, antigen retrieval may be performed with citrate buffer pH 6.0

Positive Controls:

WB : A431 cells, mouse testis tissue, HeLa cells, HEK-293T cells, HepG2 cells, mouse heart tissue, rat heart tissue

IHC : human intrahepatic cholangiocarcinoma tissue, human stomach tissue

IF/ICC : HepG2 cells,

Background Information

H-domain containing 4, also known as EHD4, belongs to the EHD protein family. Northern blot analysis detected expression of 4 mRNA species of approximately 2.0, 2.7, 3.2, and 3.6 kb. All of the transcripts are highly expressed in pancreas, and the 2.7- and 3.6-kb transcripts are highly expressed in heart. Only weak expression is found in other tissues.

Notable Publications

Author	Pubmed ID	Journal	Application
Ivana Yeow	28943089	Curr Biol	WB
Quan Zhou	31707150	EBioMedicine	WB
Lingling Zhang	33964295	Life Sci	WB

Storage

Storage:
Store at -20°C. Stable for one year after shipment.
Storage Buffer:
PBS with 0.02% sodium azide and 50% glycerol pH 7.3.
Aliquoting is unnecessary for -20°C storage

For technical support and original validation data for this product please contact:

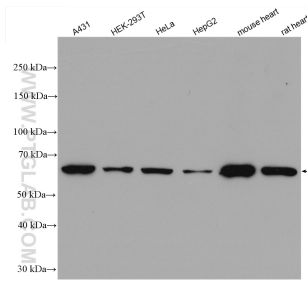
T: 4006900926

E: Proteintech-CN@ptglab.com

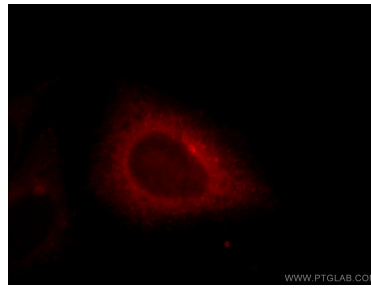
W: ptgcn.com

This product is exclusively available under Proteintech Group brand and is not available to purchase from any other manufacturer.

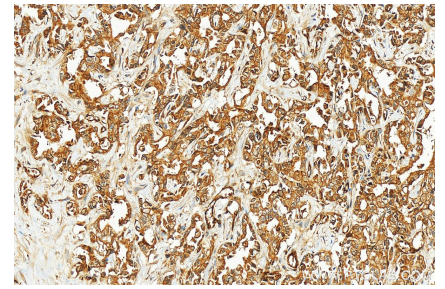
Selected Validation Data



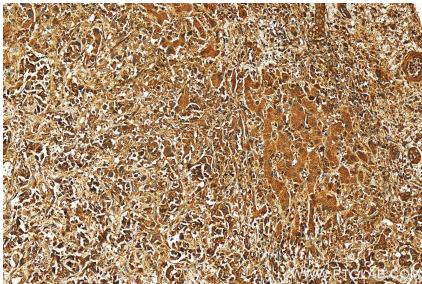
Various lysates were subjected to SDS PAGE followed by western blot with 11382-2-AP (EHD4 antibody) at dilution of 1:4000 incubated at room temperature for 1.5 hours.



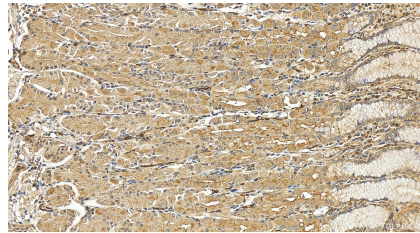
Immunofluorescent analysis of HepG2 cells, using EHD4 antibody 11382-2-AP at 1:25 dilution and Rhodamine-labeled goat anti-rabbit IgG (red).



Immunohistochemical analysis of paraffin-embedded human intrahepatic cholangiocarcinoma tissue slide using 11382-2-AP (EHD4 antibody) at dilution of 1:200 (under 20x lens). Heat mediated antigen retrieval with Tris-EDTA buffer (pH 9.0).



Immunohistochemical analysis of paraffin-embedded human intrahepatic cholangiocarcinoma tissue slide using 11382-2-AP (EHD4 antibody) at dilution of 1:200 (under 20x lens). Heat mediated antigen retrieval with Tris-EDTA buffer (pH 9.0).



Immunohistochemical analysis of paraffin-embedded human stomach tissue slide using 11382-2-AP (EHD4 antibody) at dilution of 1:200 (under 20x lens). Heat mediated antigen retrieval with Tris-EDTA buffer (pH 9.0).