

For Research Use Only

GKAP1 Polyclonal antibody

Catalog Number: 11395-1-AP

Featured Product

1 Publications



Basic Information

Catalog Number:

11395-1-AP

Size:

1000 µg/ml

Source:

Rabbit

Isotype:

IgG

Immunogen Catalog Number:

AG1914

GenBank Accession Number:

BC014476

GeneID (NCBI):

80318

UNIPROT ID:

Q5VSY0

Full Name:

G kinase anchoring protein 1

Calculated MW:

366 aa, 42 kDa

Observed MW:

45-50 kDa

Purification Method:

Antigen affinity purification

Recommended Dilutions:

WB 1:500-1:1000

IHC 1:20-1:200

Applications

Tested Applications:

IHC, WB, ELISA

Cited Applications:

WB, IF, IHC

Species Specificity:

human, mouse, rat

Cited Species:

human, mouse

Note-IHC: suggested antigen retrieval with TE buffer pH 9.0; (*) Alternatively, antigen retrieval may be performed with citrate buffer pH 6.0

Positive Controls:

WB : HEK-293 cells, mouse testis tissue

IHC : human cervical cancer tissue, human testis tissue

Background Information

GKAP1, or GKAP42, is a novel male germ cell-specific 42-kDa protein isolated by Yuasa K et al. GKAP42 mRNA is specifically expressed in testis, where it is restricted to the spermatocytes and early round spermatids.

Notable Publications

Author	Pubmed ID	Journal	Application
Hanshu Wang	31318116	Mol. Reprod. Dev.	WB, IF, IHC

Storage

Storage:

Store at -20°C. Stable for one year after shipment.

Storage Buffer:

PBS with 0.02% sodium azide and 50% glycerol pH 7.3.

Aliquoting is unnecessary for -20°C storage

For technical support and original validation data for this product please contact:

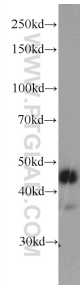
T: 4006900926

E: Proteintech-CN@ptglab.com

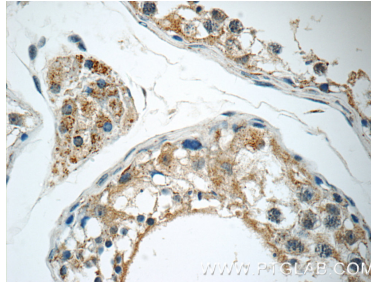
W: ptgcn.com

This product is exclusively available under Proteintech Group brand and is not available to purchase from any other manufacturer.

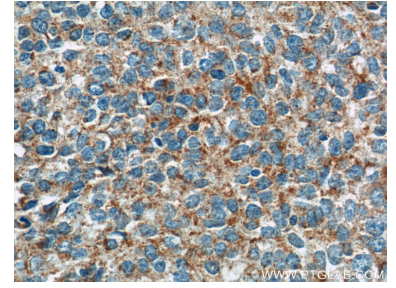
Selected Validation Data



HEK-293 cells were subjected to SDS PAGE followed by western blot with 11395-1-AP (GKAP1 Antibody) at dilution of 1:600 incubated at 4 degree celsius over night.



Immunohistochemical analysis of paraffin-embedded human testis tissue slide using 11395-1-AP (GKAP1 Antibody) at dilution of 1:50 (under 40x lens).



Immunohistochemical analysis of paraffin-embedded human cervical cancer tissue slide using 11395-1-AP (GKAP1 Antibody) at dilution of 1:50 (under 40x lens).