

For Research Use Only

LYPD1 Polyclonal antibody

Catalog Number: 11415-1-AP



Basic Information

Catalog Number: 11415-1-AP	GenBank Accession Number: BC017318	Purification Method: Antigen affinity purification
Size: 150 ug/ml	GeneID (NCBI): 116372	Recommended Dilutions: WB 1:200-1:1000 IHC 1:50-1:500
Source: Rabbit	UNIPROT ID: Q8N2G4	
Isotype: IgG	Full Name: LY6/PLAUR domain containing 1	
Immunogen Catalog Number: AG1965	Calculated MW: 141 aa, 15 kDa	
	Observed MW: 15 kDa	

Applications

Tested Applications:
WB, IHC, ELISA

Species Specificity:
mouse, rat

Note-IHC: suggested antigen retrieval with TE buffer pH 9.0; (*) Alternatively, antigen retrieval may be performed with citrate buffer pH 6.0

Positive Controls:

WB : mouse brain tissue, rat brain tissue

IHC : human ovary cancer tissue,

Background Information

LY6/PLAUR domain containing 1 (LYPD1) is a highly conserved glycosylphosphatidylinositol (GPI)-anchored protein. LYPD1 contains one cysteine-rich extracellular leukocyte antigen-6 (Ly6)/uPAR (PLAUR) domain followed by signal sequence that triggers posttranslational GPI-anchor addition incorporating mature, LYPD1 into the plasma membrane. LYPD1 is believed to act as a modulator of nicotinic acetylcholine receptors (nAChRs) activity. LYPD1 increases receptor desensitization in vitro and decreases affinity for ACh of alpha-4:beta-2-containing nAChRs. LYPD1 has 4 isoforms produced by alternative splicing (PMID: 33536191).

Storage

Storage:

Store at -20°C. Stable for one year after shipment.

Storage Buffer:

PBS with 0.02% sodium azide and 50% glycerol pH 7.3.

Aliquoting is unnecessary for -20°C storage

For technical support and original validation data for this product please contact:

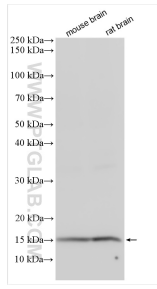
T: 4006900926

E: Proteintech-CN@ptglab.com

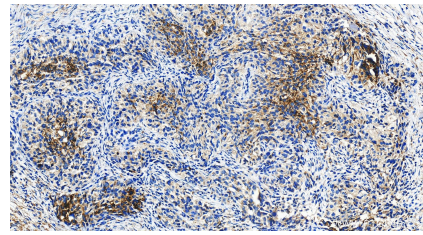
W: ptgcn.com

This product is exclusively available under Proteintech Group brand and is not available to purchase from any other manufacturer.

Selected Validation Data



Various lysates were subjected to SDS PAGE followed by western blot with 11415-1-AP (LYPD1 antibody) at dilution of 1:400 incubated at room temperature for 1.5 hours.



Immunohistochemical analysis of paraffin-embedded human ovary cancer tissue slide using 11415-1-AP (LYPD1 antibody) at dilution of 1:100 (under 20x lens). Heat mediated antigen retrieval with Tris-EDTA buffer (pH 9.0).