

For Research Use Only

# Kindlin 2 Polyclonal antibody

Catalog Number: 11453-1-AP

Featured Product

36 Publications



## Basic Information

**Catalog Number:**

11453-1-AP

**Size:**

600 µg/ml

**Source:**

Rabbit

**Isotype:**

IgG

**Immunogen Catalog Number:**

AG2013

**GenBank Accession Number:**

BC017327

**GeneID (NCBI):**

10979

**UNIPROT ID:**

Q96AC1

**Full Name:**

fermitin family homolog 2

(Drosophila)

**Calculated MW:**

680 aa, 78 kDa

**Observed MW:**

78 kDa

**Purification Method:**

Antigen affinity purification

**Recommended Dilutions:**

WB 1:2000-1:14000

IP 0.5-4.0 µg for 1.0-3.0 mg of total

protein lysate

IHC 1:50-1:500

## Applications

**Tested Applications:**

WB, IP, IHC, ELISA

**Cited Applications:**

WB, IHC, IF, IP, CoIP

**Species Specificity:**

human, mouse, rat

**Cited Species:**

human, mouse, rat, zebrafish, hamster

**Positive Controls:**

WB : A549 cells,

IP : A549 cells,

IHC : human lung cancer tissue,

**Note-IHC: suggested antigen retrieval with TE buffer pH 9.0; (\*) Alternatively, antigen retrieval may be performed with citrate buffer pH 6.0**

## Background Information

FERMT2, also named as KIND2, MIG2, PLEKHC1, MIG-2 and Kindlin-2, belongs to the kindlin family. There are three FERMT2 isoforms that participate in the connection between extracellular matrix (ECM) adhesion sites and the actin cytoskeleton and also in the orchestration of actin assembly and cell shape modulation. FERMT2 recruits migfilin (FBLP1) protein to cell-ECM focal adhesion sites. Variable expression in human cancers and mesenchymal cancer invasion are now linked with FERMT2, which may play an important role in carcinomas development. Catalog#11453-1-AP is a rabbit polyclonal antibody against human FERMT2.

## Notable Publications

Author	Pubmed ID	Journal	Application
Yasmin A Kadry	30254023	J Cell Sci	WB
Jun Yu	30245857	Cell Death Discov	WB,IHC,IF
Ling Guo	33004813	Nat Commun	WB,IP

## Storage

**Storage:**

Store at -20°C. Stable for one year after shipment.

**Storage Buffer:**

PBS with 0.02% sodium azide and 50% glycerol pH 7.3.

Aliquoting is unnecessary for -20°C storage

For technical support and original validation data for this product please contact:

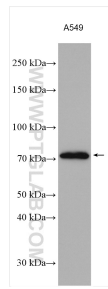
T: 4006900926

E: Proteintech-CN@ptglab.com

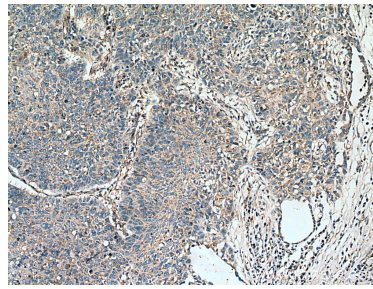
W: ptgcn.com

This product is exclusively available under Proteintech Group brand and is not available to purchase from any other manufacturer.

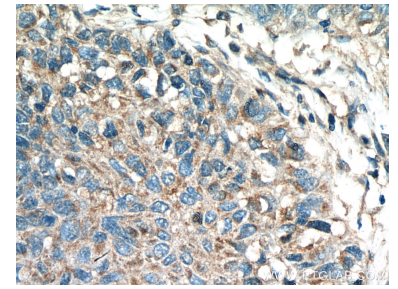
## Selected Validation Data



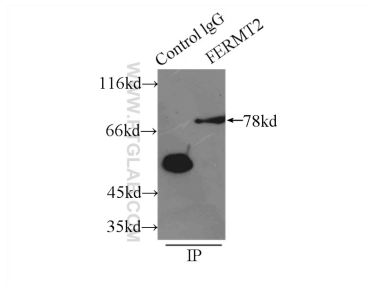
A549 cells were subjected to SDS PAGE followed by western blot with 11453-1-AP (Kindlin 2 antibody) at dilution of 1:7000 incubated at room temperature for 1.5 hours.



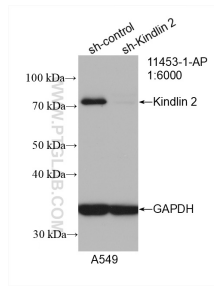
Immunohistochemical analysis of paraffin-embedded human lung cancer tissue slide using 11453-1-AP (Kindlin 2 antibody) at dilution of 1:200 (under 10x lens). Heat mediated antigen retrieval with Tris-EDTA buffer (pH 9.0).



Immunohistochemical analysis of paraffin-embedded human lung cancer tissue slide using 11453-1-AP (Kindlin 2 antibody) at dilution of 1:200 (under 40x lens). Heat mediated antigen retrieval with Tris-EDTA buffer (pH 9.0).



IP result of anti-Kindlin 2 (IP:11453-1-AP, 3ug; Detection:11453-1-AP 1:1000) with A549 cells lysate 3300ug.



WB result of Kindlin 2 antibody (11453-1-AP; 1:6000; incubated at room temperature for 1.5 hours) with sh-Control and sh-Kindlin 2 transfected A549 cells.