

For Research Use Only

MZB1 Polyclonal antibody

Catalog Number: 11454-1-AP **7 Publications**



Basic Information

Catalog Number: 11454-1-AP	GenBank Accession Number: BC021275	Purification Method: Antigen affinity purification
Size: 350 µg/ml	GeneID (NCBI): 51237	Recommended Dilutions: WB 1:500-1:2000 IHC 1:20-1:200
Source: Rabbit	UNIPROT ID: Q8WU39	
Isotype: IgG	Full Name: hypothetical protein MGC29506	
Immunogen Catalog Number: AG2015	Calculated MW: 189 aa, 21 kDa	
	Observed MW: 19-21 kDa	

Applications

Tested Applications: IHC, WB, ELISA	Positive Controls: WB : Raji cells, IHC : human gliomas tissue, human small intestine tissue
Cited Applications: WB, IF, IHC	
Species Specificity: human	
Cited Species: human	
Note-IHC: suggested antigen retrieval with TE buffer pH 9.0; (*) Alternatively, antigen retrieval may be performed with citrate buffer pH 6.0	

Background Information

MZB1, also named as ,PACAP, MGC29506 and pERp1, belongs to the PERP1 family. It is associates with immunoglobulin M (IgM) heavy and light chains and promotes IgM assembly and secretion. MGC29506(PACAP) may exert its effect by acting as a molecular chaperone or as an oxidoreductase as it displays a low level of oxidoreductase activity. Isoform 2 may be involved in regulation of apoptosis. (PubMed: 11350957) MZB1 has 5 isoforms with MW 21kd and 7-13kd.

Notable Publications

Author	Pubmed ID	Journal	Application
Manabu Watanabe	32963604	Oncol Lett	IHC
Kentaro Miyake	29180208	J Surg Res	IHC
Mitsuro Kanda	27459504	Int J Cancer	IHC

Storage

Storage:
Store at -20°C. Stable for one year after shipment.
Storage Buffer:
PBS with 0.02% sodium azide and 50% glycerol pH 7.3.
Aliquoting is unnecessary for -20°C storage

For technical support and original validation data for this product please contact:

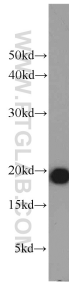
T: 4006900926

E: Proteintech-CN@ptglab.com

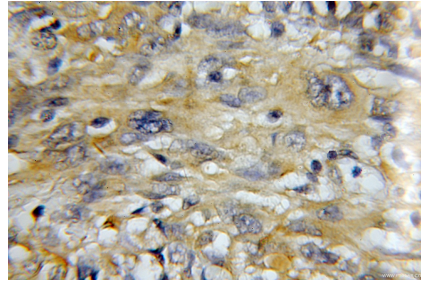
W: ptgcn.com

This product is exclusively available under Proteintech Group brand and is not available to purchase from any other manufacturer.

Selected Validation Data



Raji cells were subjected to SDS PAGE followed by western blot with 11454-1-AP (MZB1 antibody) at dilution of 1:1000 incubated at room temperature for 1.5 hours.



Immunohistochemical analysis of paraffin-embedded human gliomas using 11454-1-AP (MZB1 antibody) at dilution of 1:50 (under 40x lens).