

For Research Use Only

PSMD5 Polyclonal antibody

Catalog Number: 11469-1-AP



Basic Information

Catalog Number:

11469-1-AP

Size:

600 µg/ml

Source:

Rabbit

Isotype:

IgG

Immunogen Catalog Number:

AG2026

GenBank Accession Number:

BC014478

GeneID (NCBI):

5711

UNIPROT ID:

Q16401

Full Name:

proteasome (prosome, macropain)

26S subunit, non-ATPase, 5

Calculated MW:

504 aa, 56 kDa

Observed MW:

50 kDa

Purification Method:

Antigen affinity purification

Recommended Dilutions:

WB 1:1000-1:8000

IP 0.5-4.0 µg for 1.0-3.0 mg of total protein lysate

IHC 1:20-1:200

Applications

Tested Applications:

IHC, IP, WB, ELISA

Species Specificity:

human, mouse, rat

Note-IHC: suggested antigen retrieval with TE buffer pH 9.0; (*) Alternatively, antigen retrieval may be performed with citrate buffer pH 6.0

Positive Controls:

WB: HeLa cells, Jurkat cells, human liver tissue, mouse liver tissue

IP: mouse liver tissue,

IHC: human prostate cancer tissue,

Background Information

PSMD5, also named as KIAA0072, belongs to the proteasome subunit 55B/HSM3 family. It acts as a chaperone during the assembly of the 26S proteasome, specifically of the base subcomplex of the PA700/19S regulatory complex (RC). In the initial step of the base subcomplex assembly, it is part of an intermediate PSMD5:PSMC2:PSMC1:PSMD2 module which probably assembles with a SMD10:PSMC4:PSMC5:PAAF1 module followed by dissociation of PSMD5. (PMID:15489334). This antibody is specific to PSMD5.

Storage

Storage:

Store at -20°C. Stable for one year after shipment.

Storage Buffer:

PBS with 0.02% sodium azide and 50% glycerol pH 7.3.

Aliquoting is unnecessary for -20°C storage

For technical support and original validation data for this product please contact:

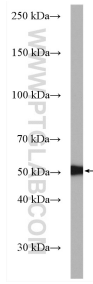
T: 4006900926

E: Proteintech-CN@ptglab.com

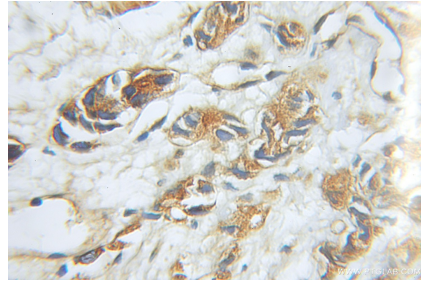
W: ptgcn.com

This product is exclusively available under Proteintech Group brand and is not available to purchase from any other manufacturer.

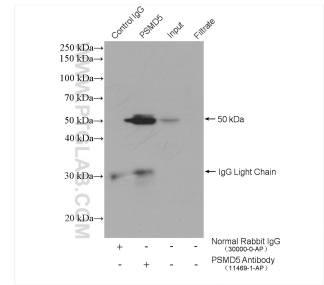
Selected Validation Data



HeLa cells were subjected to SDS PAGE followed by western blot with 11469-1-AP (PSMD5 antibody) at dilution of 1:5000 incubated at room temperature for 1.5 hours.



Immunohistochemical analysis of paraffin-embedded human prostate cancer using 11469-1-AP (PSMD5 antibody) at dilution of 1:100 (under 10x lens).



IP result of anti-PSMD5 (IP:11469-1-AP, 4ug; Detection:11469-1-AP 1:1000) with mouse liver tissue lysate 4000 ug.