

For Research Use Only

MEPCE Polyclonal antibody

Catalog Number: 11526-1-AP

Featured Product

4 Publications



Basic Information

Catalog Number: 11526-1-AP	GenBank Accession Number: BC018935	Purification Method: Antigen affinity purification
Size: 400 µg/ml	GeneID (NCBI): 56257	Recommended Dilutions: WB 1:500-1:1000 IHC 1:20-1:200
Source: Rabbit	UNIPROT ID: Q7L2J0	
Isotype: IgG	Full Name: methylphosphate capping enzyme	
Immunogen Catalog Number: AG2092	Calculated MW: 689 aa, 74 kDa	
	Observed MW: 74 kDa	

Applications

Tested Applications: IHC, WB, ELISA	Positive Controls: WB : HeLa cells, MCF-7 cells, K-562 cells IHC : human colon cancer tissue,
Cited Applications: WB, IP	
Species Specificity: human	
Cited Species: human, zebrafish	
Note-IHC: suggested antigen retrieval with TE buffer pH 9.0; (*) Alternatively, antigen retrieval may be performed with citrate buffer pH 6.0	

Background Information

MEPCE is a Component of the 75K snRNP complex, and a S-adenosyl-L-methionine-dependent methyltransferase that adds a methylphosphate cap at the 5'-end of 75K snRNA, which leads to its stabilization.

Notable Publications

Author	Pubmed ID	Journal	Application
Eilebrecht Sebastian S	21957495	RNA Biol	WB
Kamaleldin E Elagib	24369834	Dev Cell	WB
Eilebrecht Sebastian S	21087998	Nucleic Acids Res	WB

Storage

Storage:
Store at -20°C. Stable for one year after shipment.
Storage Buffer:
PBS with 0.02% sodium azide and 50% glycerol pH 7.3.
Aliquoting is unnecessary for -20°C storage

For technical support and original validation data for this product please contact:

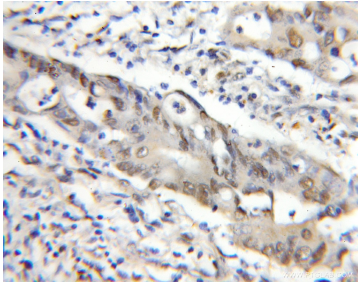
T: 4006900926

E: Proteintech-CN@ptglab.com

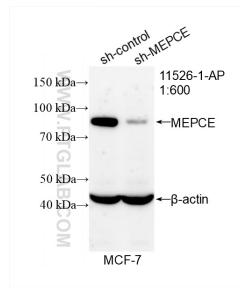
W: ptgcn.com

This product is exclusively available under Proteintech Group brand and is not available to purchase from any other manufacturer.

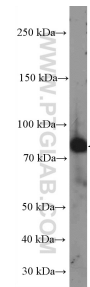
Selected Validation Data



Immunohistochemical analysis of paraffin-embedded human colon cancer using 11526-1-AP (MEPCE antibody) at dilution of 1:50 (under 10x lens).



WB result of MEPCE antibody (11526-1-AP; 1:600; incubated at room temperature for 1.5 hours) with sh-Control and sh-MEPCE transfected MCF-7 cells.



HeLa cells were subjected to SDS PAGE followed by western blot with 11526-1-AP (MEPCE Antibody) at dilution of 1:600 incubated at room temperature for 1.5 hours.