

For Research Use Only

ASCC2 Polyclonal antibody

Catalog Number: 11529-1-AP **3 Publications**



Basic Information

Catalog Number:

11529-1-AP

Size:

1200 ug/ml

Source:

Rabbit

Isotype:

IgG

Immunogen Catalog Number:

AG2100

GenBank Accession Number:

BC025368

GeneID (NCBI):

84164

UNIPROT ID:

Q9H118

Full Name:

activating signal cointegrator 1 complex subunit 2

Calculated MW:

757 aa, 86 kDa

Observed MW:

90-100 kDa

Purification Method:

Antigen affinity purification

Recommended Dilutions:

WB 1:500-1:3000

IP 0.5-4.0 ug for 1.0-3.0 mg of total protein lysate

IHC 1:50-1:500

IF/ICC 1:50-1:500

Applications

Tested Applications:

WB, IHC, IF/ICC, FC (Intra), IP, ELISA

Cited Applications:

WB

Species Specificity:

human, mouse, rat

Cited Species:

human, mouse

Note-IHC: suggested antigen retrieval with TE buffer pH 9.0; (*) Alternatively, antigen retrieval may be performed with citrate buffer pH 6.0

Positive Controls:

WB: HEK-293T cells, human colon tissue, human brain tissue, HeLa cells, mouse colon tissue, mouse brain tissue, rat brain tissue

IP: HeLa cells,

IHC: human colon cancer tissue,

IF/ICC: HepG2 cells,

Background Information

Notable Publications

Author	Pubmed ID	Journal	Application
Junqiao Jia	33139697	Nat Commun	WB
Wen-Jin Chen	37386638	Chin Med	WB
Junqiao Jia	37019967	Nat Commun	WB

Storage

Storage:

Store at -20°C. Stable for one year after shipment.

Storage Buffer:

PBS with 0.02% sodium azide and 50% glycerol pH 7.3.

Aliquoting is unnecessary for -20°C storage

For technical support and original validation data for this product please contact:

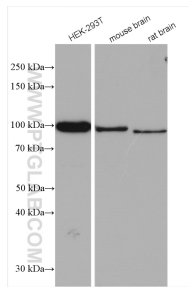
T: 4006900926

E: Proteintech-CN@ptglab.com

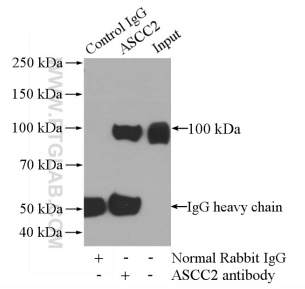
W: ptgcn.com

This product is exclusively available under Proteintech Group brand and is not available to purchase from any other manufacturer.

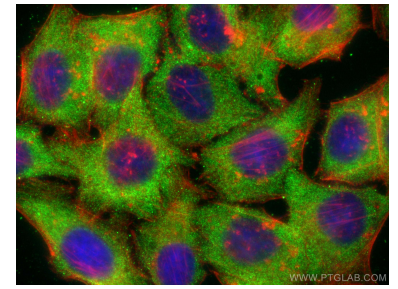
Selected Validation Data



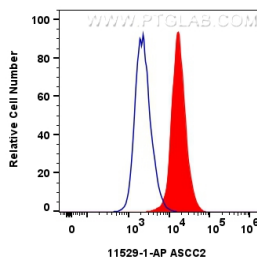
Various lysates were subjected to SDS PAGE followed by western blot with 11529-1-AP (ASCC2 antibody) at dilution of 1:1500 incubated at room temperature for 1.5 hours.



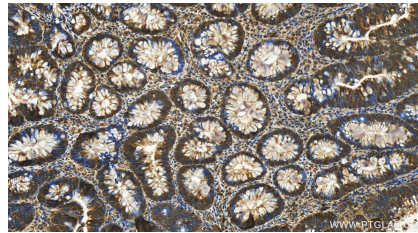
IP result of anti-ASCC2 (IP:11529-1-AP, 4ug; Detection:11529-1-AP 1:1000) with HeLa cells lysate 2640ug.



Immunofluorescent analysis of (-20°C Ethanol) fixed HepG2 cells using ASCC2 antibody (11529-1-AP) at dilution of 1:200 and CoraLite®488-Conjugated AffiniPure Goat Anti-Rabbit IgG(H+L), CL594-phalloidin (red).



1×10^6 HepG2 cells were intracellularly stained with 0.4 ug ASCC2 Polyclonal antibody (11529-1-AP)(red), or 0.4 ug Rabbit IgG control Rabbit PolyAb (30000-0-AP) (blue). Cells were fixed with 4% PFA and permeabilized with Flow Cytometry Perm Buffer (PF00011-C).



Immunohistochemical analysis of paraffin-embedded human colon cancer tissue slide using 11529-1-AP (ASCC2 antibody) at dilution of 1:200 (under 20x lens). Heat mediated antigen retrieval with Tris-EDTA buffer (pH 9.0).