

For Research Use Only

C1QA Polyclonal antibody

Catalog Number: 11602-1-AP **8 Publications**



Basic Information

Catalog Number:

11602-1-AP

Size:

550 µg/ml

Source:

Rabbit

Isotype:

IgG

Immunogen Catalog Number:

AG2141

GenBank Accession Number:

BC030153

GeneID (NCBI):

712

UNIPROT ID:

P02745

Full Name:

complement component 1, q subcomponent, A chain

Calculated MW:

245 aa, 26 kDa

Observed MW:

26-30 kDa

Purification Method:

Antigen affinity purification

Recommended Dilutions:

WB 1:1000-1:4000

IP 0.5-4.0 µg for 1.0-3.0 mg of total protein lysate

Applications

Tested Applications:

IP, WB, ELISA

Cited Applications:

WB, IF

Species Specificity:

human, mouse

Cited Species:

human, rat, mouse

Positive Controls:

WB: human plasma, mouse liver tissue, mouse serum, human liver tissue, human heart tissue, human lung tissue, human colon tissue, human spleen tissue

IP: mouse liver tissue,

Background Information

The first component of complement, C1, is a calcium-dependent complex of the 3 subcomponents C1q, C1r, and C1s. C1q is composed of 18 polypeptide chains: six A-chains, six B-chains, and six C-chains. Each chain contains a collagen-like region located near the N terminus and a C-terminal globular region. Deficiency of C1q has been associated with lupus erythematosus and glomerulonephritis. This antibody is raised against C1qA which is the A-chain polypeptide of human complement subcomponent C1q.

Notable Publications

Author	Pubmed ID	Journal	Application
Yongyun Li	34536440	J Mol Cell Cardiol	IF
Fei Shen	34691256	Oncol Lett	WB
Maud Gratuze	36368315	Neuron	WB

Storage

Storage:

Store at -20°C. Stable for one year after shipment.

Storage Buffer:

PBS with 0.02% sodium azide and 50% glycerol pH 7.3.

Aliquoting is unnecessary for -20°C storage

For technical support and original validation data for this product please contact:

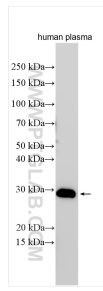
T: 4006900926

E: Proteintech-CN@ptglab.com

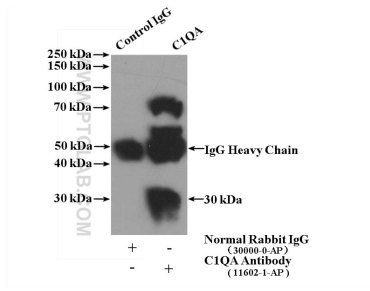
W: ptgcn.com

This product is exclusively available under Proteintech Group brand and is not available to purchase from any other manufacturer.

Selected Validation Data



human plasma were subjected to SDS PAGE followed by western blot with 11602-1-AP (C1QA antibody) at dilution of 1:2000 incubated at room temperature for 1.5 hours.



IP result of anti-C1QA (IP:11602-1-AP, 4ug; Detection:11602-1-AP 1:300) with mouse liver tissue lysate 4000ug.