

For Research Use Only

TTC1 Polyclonal antibody

Catalog Number: 11676-1-AP

Featured Product

1 Publications



Basic Information

Catalog Number:

11676-1-AP

Size:

1000 µg/ml

Source:

Rabbit

Isotype:

IgG

Immunogen Catalog Number:

AG2277

GenBank Accession Number:

BC000942

GeneID (NCBI):

7265

UNIPROT ID:

Q99614

Full Name:

tetratricopeptide repeat domain 1

Calculated MW:

33.5 kDa

Observed MW:

34 kDa

Purification Method:

Antigen affinity purification

Recommended Dilutions:

WB 1:2000-1:12000

IHC 1:20-1:200

IF/ICC 1:50-1:500

Applications

Tested Applications:

WB, IHC, IF/ICC, ELISA

Cited Applications:

WB, IP

Species Specificity:

human, mouse, rat

Cited Species:

human

Note-IHC: suggested antigen retrieval with **TE buffer pH 9.0; (*) Alternatively, antigen retrieval may be performed with citrate buffer pH 6.0**

Positive Controls:

WB: HEK-293 cells, HepG2 cells, Jurkat cells, HeLa cells

IHC: human colon cancer tissue,

IF/ICC: HepG2 cells,

Background Information

Notable Publications

Author	Pubmed ID	Journal	Application
Gayathri Muthukumar	38428433	Mol Cell	WB,IP

Storage

Storage:

Store at -20°C. Stable for one year after shipment.

Storage Buffer:

PBS with 0.02% sodium azide and 50% glycerol pH 7.3.

Aliquoting is unnecessary for -20°C storage

For technical support and original validation data for this product please contact:

T: 4006900926

E: Proteintech-CN@ptglab.com

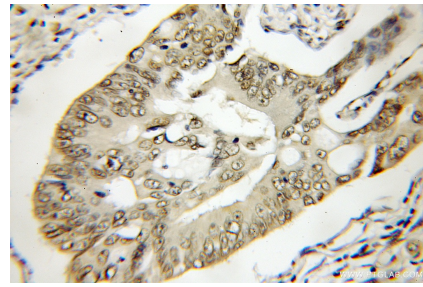
W: ptgcn.com

This product is exclusively available under Proteintech Group brand and is not available to purchase from any other manufacturer.

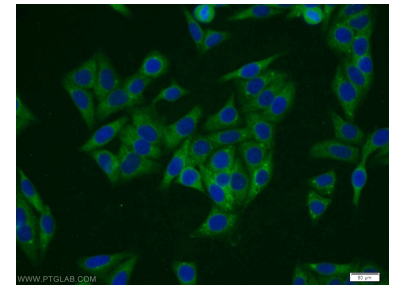
Selected Validation Data



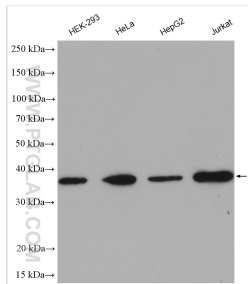
HEK-293 cells were subjected to SDS PAGE followed by western blot with 11676-1-AP (TTC1 antibody) at dilution of 1:500 incubated at room temperature for 1.5 hours.



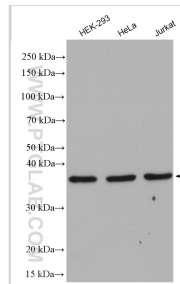
Immunohistochemical analysis of paraffin-embedded human colon cancer using 11676-1-AP (TTC1 antibody) at dilution of 1:50 (under 10x lens).



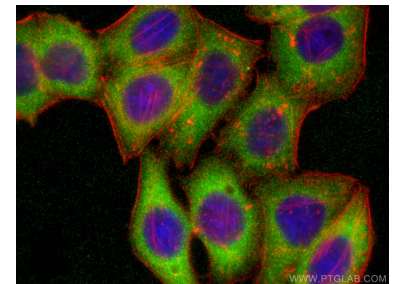
Immunofluorescent analysis of HepG2 cells using 11676-1-AP (TTC1 antibody) at dilution of 1:25 and Alexa Fluor 488-conjugated AffiniPure Goat Anti-Rabbit IgG(H+L).



Various lysates were subjected to SDS PAGE followed by western blot with 11676-1-AP (TTC1 antibody) at dilution of 1:6000 incubated at room temperature for 1.5 hours.



Various lysates were subjected to SDS PAGE followed by western blot with 11676-1-AP (TTC1 antibody) at dilution of 1:6000 incubated at room temperature for 1.5 hours.



Immunofluorescent analysis of (-20°C Ethanol) fixed HepG2 cells using TTC1 antibody (11676-1-AP) at dilution of 1:200 and CoraLite®488-Conjugated AffiniPure Goat Anti-Rabbit IgG(H+L), CL594-phalloidin (red).