

For Research Use Only

# CSN1 Polyclonal antibody

Catalog Number: 11709-1-AP **1 Publications**



## Basic Information

**Catalog Number:**

11709-1-AP

**Size:**

200 µg/ml

**Source:**

Rabbit

**Isotype:**

IgG

**Immunogen Catalog Number:**

AG2273

**GenBank Accession Number:**

BC000155

**GeneID (NCBI):**

2873

**UNIPROT ID:**

Q13098

**Full Name:**

G protein pathway suppressor 1

**Calculated MW:**

491 aa, 55-60 kDa

**Observed MW:**

55-70 kDa

**Purification Method:**

Antigen affinity purification

**Recommended Dilutions:**

WB 1:500-1:2000

IP 0.5-4.0 µg for 1.0-3.0 mg of total protein lysate

IHC 1:20-1:200

IF/ICC 1:10-1:100

## Applications

**Tested Applications:**

WB, IHC, IF/ICC, IP, ELISA

**Cited Applications:**

WB

**Species Specificity:**

human

**Cited Species:**

human

**Note-IHC:** suggested antigen retrieval with **TE buffer pH 9.0;** (\*) Alternatively, antigen retrieval may be performed with **citrate buffer pH 6.0**

**Positive Controls:**

**WB:** HEK-293 cells, MCF-7 cells, HT-1080 cells, Raji cells, K-562 cells

**IP:** HeLa cells,

**IHC:** human prostate cancer tissue,

**IF/ICC:** MCF-7 cells,

## Background Information

### Notable Publications

Author	Pubmed ID	Journal	Application
Hangwei Fu	33200805	Mol Med Rep	WB

## Storage

**Storage:**

Store at -20°C. Stable for one year after shipment.

**Storage Buffer:**

PBS with 0.02% sodium azide and 50% glycerol pH 7.3.

Aliquoting is unnecessary for -20°C storage

For technical support and original validation data for this product please contact:

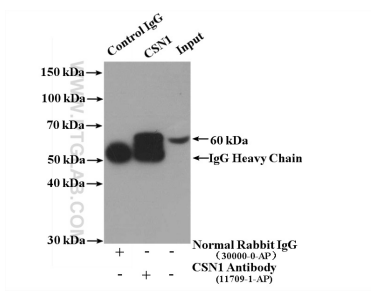
T: 4006900926

E: Proteintech-CN@ptglab.com

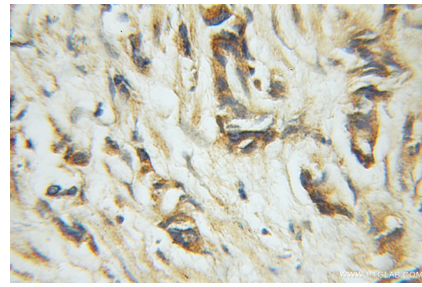
W: ptgcn.com

**This product is exclusively available under Proteintech Group brand and is not available to purchase from any other manufacturer.**

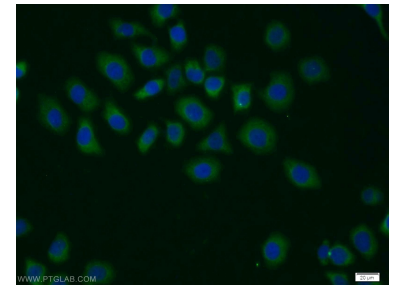
## Selected Validation Data



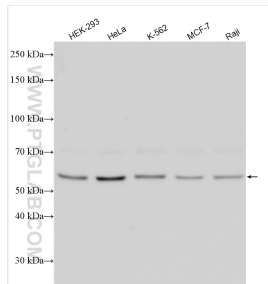
IP result of anti-CSN1 (IP:11709-1-AP, 4ug; Detection:11709-1-AP 1:500) with HeLa cells lysate 2600 ug.



Immunohistochemical analysis of paraffin-embedded human prostate cancer using 11709-1-AP (CSN1 antibody) at dilution of 1:50 (under 10x lens).



Immunofluorescent analysis of MCF-7 cells using 11709-1-AP (CSN1 antibody) at dilution of 1:25 and Alexa Fluor 488-conjugated AffiniPure Goat Anti-Rabbit IgG(H+L).



Various lysates were subjected to SDS PAGE followed by western blot with 11709-1-AP (CSN1 antibody) at dilution of 1:1000 incubated at room temperature for 1.5 hours.