

For Research Use Only

TWF1 Polyclonal antibody

Catalog Number: 11732-1-AP

Featured Product

4 Publications



Basic Information

Catalog Number:

11732-1-AP

Size:

450 µg/ml

Source:

Rabbit

Isotype:

IgG

Immunogen Catalog Number:

AG2332

GenBank Accession Number:

BC022344

GeneID (NCBI):

5756

UNIPROT ID:

Q12792

Full Name:

twinfilin, actin-binding protein, homolog 1 (Drosophila)

Calculated MW:

368 aa, 42 kDa

Observed MW:

42 kDa

Purification Method:

Antigen affinity purification

Recommended Dilutions:

WB 1:2000-1:14000

IHC 1:50-1:500

IF/ICC 1:200-1:800

Applications

Tested Applications:

WB, IHC, IF/ICC, ELISA

Cited Applications:

WB, IHC, CoIP, IF

Species Specificity:

human, mouse, rat

Cited Species:

human, mouse

Note-IHC: suggested antigen retrieval with TE buffer pH 9.0; (*) Alternatively, antigen retrieval may be performed with citrate buffer pH 6.0

Positive Controls:

WB: C6 cells, HeLa cells, C2C12 cells, mouse testis tissue, rat testis tissue, NIH/3T3 cells

IHC: human lung cancer tissue, human breast cancer tissue

IF/ICC: HeLa cells,

Background Information

Notable Publications

Author	Pubmed ID	Journal	Application
Lu Li	28864421	Biochem Biophys Res Commun	WB,IF
Sharof Khudayberdiev	38713765	Sci Signal	WB
Yu Wang	37358822	FASEB J	WB,IHC,CoIP

Storage

Storage:

Store at -20°C. Stable for one year after shipment.

Storage Buffer:

PBS with 0.02% sodium azide and 50% glycerol pH 7.3.

Aliquoting is unnecessary for -20°C storage

For technical support and original validation data for this product please contact:

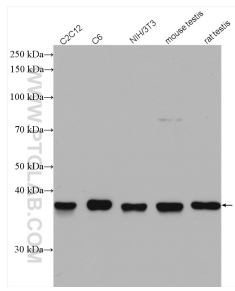
T: 4006900926

E: Proteintech-CN@ptglab.com

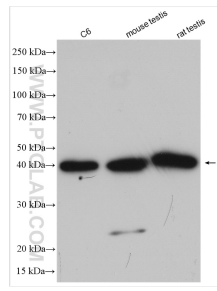
W: ptgcn.com

This product is exclusively available under Proteintech Group brand and is not available to purchase from any other manufacturer.

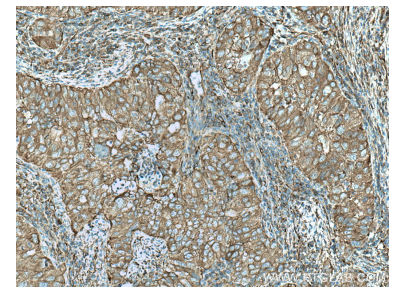
Selected Validation Data



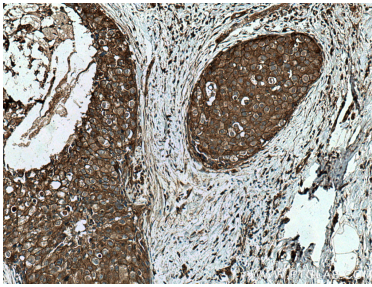
Various lysates were subjected to SDS PAGE followed by western blot with 11732-1-AP (TWF1 antibody) at dilution of 1:3000 incubated at room temperature for 1.5 hours.



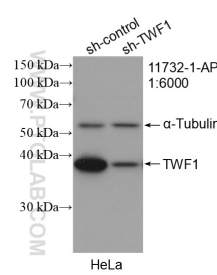
Various lysates were subjected to SDS PAGE followed by western blot with 11732-1-AP (TWF1 antibody) at dilution of 1:7000 incubated at room temperature for 1.5 hours.



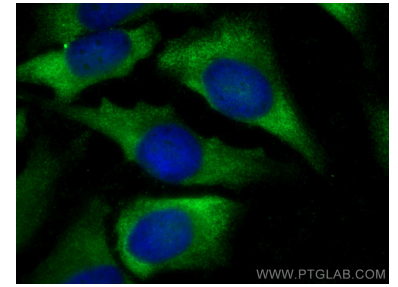
Immunohistochemical analysis of paraffin-embedded human lung cancer tissue slide using 11732-1-AP (TWF1 antibody) at dilution of 1:200 (under 10x lens). Heat mediated antigen retrieval with Tris-EDTA buffer (pH 9.0).



Immunohistochemical analysis of paraffin-embedded human breast cancer tissue slide using 11732-1-AP (TWF1 antibody) at dilution of 1:200 (under 10x lens). Heat mediated antigen retrieval with Tris-EDTA buffer (pH 9.0).



WB result of TWF1 antibody (11732-1-AP; 1:6000; incubated at room temperature for 1.5 hours) with sh-Control and sh-TWF1 transfected HeLa cells.



Immunofluorescent analysis of (-20°C Ethanol) fixed HeLa cells using TWF1 antibody (11732-1-AP) at dilution of 1:400 and CoraLite®488-Conjugated AffiniPure Goat Anti-Rabbit IgG(H+L).