

For Research Use Only

# SPCS1 Polyclonal antibody

Catalog Number: 11847-1-AP

Featured Product

4 Publications



## Basic Information

**Catalog Number:**

11847-1-AP

**Size:**

550 µg/ml

**Source:**

Rabbit

**Isotype:**

IgG

**Immunogen Catalog Number:**

AG2407

**GenBank Accession Number:**

BC000884

**GeneID (NCBI):**

28972

**UNIPROT ID:**

Q9Y6A9

**Full Name:**

signal peptidase complex subunit 1 homolog (*S. cerevisiae*)

**Calculated MW:**

102 aa, 12 kDa

**Observed MW:**

12 kDa

**Purification Method:**

Antigen affinity purification

**Recommended Dilutions:**

WB 1:500-1:1000

IF/ICC 1:10-1:100

## Applications

**Tested Applications:**

WB, IF/ICC, ELISA

**Cited Applications:**

WB

**Species Specificity:**

human

**Cited Species:**

human

**Positive Controls:**

WB : HeLa cells, human skin tissue, PC-3 cells

IF/ICC : BxPC-3 cells,

## Background Information

### Notable Publications

Author	Pubmed ID	Journal	Application
Rong Zhang	27383988	Nature	WB
Nabeel Alzahrani	35130329	PLoS Pathog	WB
Iqbal Dulloo	38183983	Mol Cell	WB

## Storage

**Storage:**

Store at -20°C. Stable for one year after shipment.

**Storage Buffer:**

PBS with 0.02% sodium azide and 50% glycerol pH 7.3.

Aliquoting is unnecessary for -20°C storage

For technical support and original validation data for this product please contact:

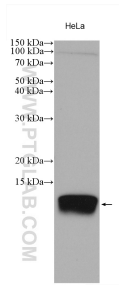
T: 4006900926

E: [Proteintech-CN@ptglab.com](mailto:Proteintech-CN@ptglab.com)

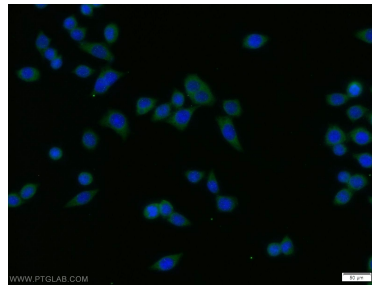
W: [ptgcn.com](http://ptgcn.com)

**This product is exclusively available under Proteintech Group brand and is not available to purchase from any other manufacturer.**

## Selected Validation Data



HeLa cells were subjected to SDS PAGE followed by western blot with 11847-1-AP (SPCS1 antibody) at dilution of 1:500 incubated at room temperature for 1.5 hours.



Immunofluorescent analysis of BxPC-3 cells using 11847-1-AP (SPCS1 antibody) at dilution of 1:25 and Alexa Fluor 488-conjugated Goat Anti-Rabbit IgG(H+L).