

For Research Use Only

SH2D1A Polyclonal antibody

Catalog Number: 11868-1-AP **1 Publications**



Basic Information

Catalog Number: 11868-1-AP	GenBank Accession Number: BC020732	Purification Method: Antigen affinity purification
Size: 800 µg/ml	GeneID (NCBI): 4068	Recommended Dilutions: WB 1:500-1:3000
Source: Rabbit	UNIPROT ID: O60880	
Isotype: IgG	Full Name: SH2 domain protein 1A	
Immunogen Catalog Number: AG2450	Calculated MW: 128 aa, 14 kDa	
	Observed MW: 16 kDa	

Applications

Tested Applications: WB, ELISA	Positive Controls: WB : mouse thymus tissue, Jurkat cells
Cited Applications: WB	
Species Specificity: human, mouse, rat	
Cited Species: human	

Background Information

SH2D1A, also named as DSHP and SAP, is an inhibitor of the SLAM self-association. It acts by blocking recruitment of the SH2-domain-containing signal-transduction molecule SHP-2 to a docking site in the SLAM cytoplasmic region. SH2D1A mediates interaction between FYN and SLAMF1. Defects in SH2D1A are a cause of lymphoproliferative syndrome X-linked type 1 (XLP1).

Notable Publications

Author	Pubmed ID	Journal	Application
Ding Shu S	22549634	Arthritis Rheum	WB

Storage

Storage:
Store at -20°C. Stable for one year after shipment.
Storage Buffer:
PBS with 0.02% sodium azide and 50% glycerol pH 7.3.
Aliquoting is unnecessary for -20°C storage

For technical support and original validation data for this product please contact:

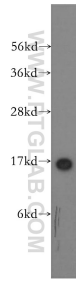
T: 4006900926

E: Proteintech-CN@ptglab.com

W: ptgcn.com

This product is exclusively available under Proteintech Group brand and is not available to purchase from any other manufacturer.

Selected Validation Data



mouse thymus tissue were subjected to SDS PAGE followed by western blot with 11868-1-AP (SH2D1A antibody) at dilution of 1:500 incubated at room temperature for 1.5 hours.