

For Research Use Only

# CBP20 Polyclonal antibody

Catalog Number: 11950-1-AP

4 Publications



## Basic Information

**Catalog Number:**

11950-1-AP

**Size:**

1300 ug/ml

**Source:**

Rabbit

**Isotype:**

IgG

**Immunogen Catalog Number:**

AG2550

**GenBank Accession Number:**

BC001255

**GeneID (NCBI):**

22916

**UNIPROT ID:**

P52298

**Full Name:**

nuclear cap binding protein subunit 2,  
20kDa

**Calculated MW:**

156 aa, 18 kDa

**Observed MW:**

18 kDa

**Purification Method:**

Antigen affinity purification

**Recommended Dilutions:**

WB 1:500-1:1000

IHC 1:250-1:1000

IF/ICC 1:200-1:800

## Applications

**Tested Applications:**

WB, IHC, IF/ICC, ELISA

**Cited Applications:**

WB, IHC, RIP

**Species Specificity:**

human, mouse, rat

**Cited Species:**

human

**Note-IHC: suggested antigen retrieval with TE buffer pH 9.0; (\*) Alternatively, antigen retrieval may be performed with citrate buffer pH 6.0**

**Positive Controls:**

WB : human heart tissue,

IHC : mouse brain tissue,

IF/ICC : HeLa cells,

## Background Information

### Notable Publications

Author	Pubmed ID	Journal	Application
Mio Iwasaki	35573189	iScience	WB
Zheng Li	39406241	Dev Cell	
Fei Li	39624324	Heliyon	RIP

## Storage

**Storage:**

Store at -20°C. Stable for one year after shipment.

**Storage Buffer:**

PBS with 0.02% sodium azide and 50% glycerol pH 7.3.

Aliquoting is unnecessary for -20°C storage

For technical support and original validation data for this product please contact:

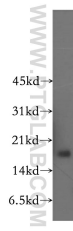
T: 4006900926

E: Proteintech-CN@ptglab.com

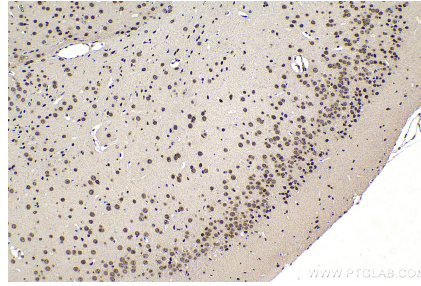
W: ptgcn.com

**This product is exclusively available under Proteintech Group brand and is not available to purchase from any other manufacturer.**

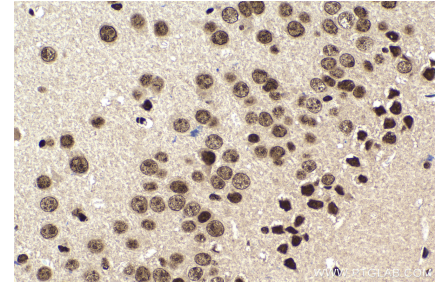
## Selected Validation Data



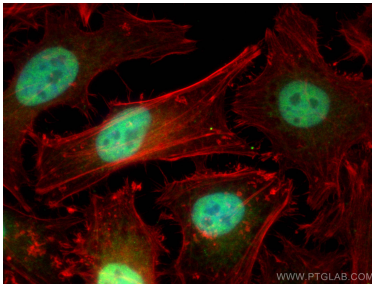
human heart tissue were subjected to SDS PAGE followed by western blot with 11950-1-AP (CBP20 antibody) at dilution of 1:500 incubated at room temperature for 1.5 hours.



Immunohistochemical analysis of paraffin-embedded mouse brain tissue slide using 11950-1-AP (CBP20 antibody) at dilution of 1:500 (under 10x lens). Heat mediated antigen retrieval with Tris-EDTA buffer (pH 9.0).



Immunohistochemical analysis of paraffin-embedded mouse brain tissue slide using 11950-1-AP (CBP20 antibody) at dilution of 1:500 (under 40x lens). Heat mediated antigen retrieval with Tris-EDTA buffer (pH 9.0).



Immunofluorescent analysis of (4% PFA) fixed HeLa cells using CBP20 antibody (11950-1-AP) at dilution of 1:400 and CoralLite@488-Conjugated AffiniPure Goat Anti-Rabbit IgG(H+L), CL594-phalloidin (red).