

For Research Use Only

# ROBO3 Polyclonal antibody

Catalog Number: 11982-1-AP



## Basic Information

<b>Catalog Number:</b> 11982-1-AP	<b>GenBank Accession Number:</b> BC008623	<b>Purification Method:</b> Antigen affinity purification
<b>Size:</b> 550 µg/ml	<b>GeneID (NCBI):</b> 64221	<b>Recommended Dilutions:</b> WB 1:500-1:2000
<b>Source:</b> Rabbit	<b>UNIPROT ID:</b> Q96MS0	
<b>Isotype:</b> IgG	<b>Full Name:</b> roundabout, axon guidance receptor, homolog 3 (Drosophila)	
<b>Immunogen Catalog Number:</b> AG2608	<b>Calculated MW:</b> 148 kDa	
	<b>Observed MW:</b> 200-250 kDa, 148 kDa	

## Applications

<b>Tested Applications:</b> WB, ELISA	<b>Positive Controls:</b> WB : Neuro-2a cells, Y79 cells
<b>Species Specificity:</b> human, mouse	

## Background Information

ROBO3 belongs to the immunoglobulin superfamily and ROBO family. ROBO3 is thought to be involved during neural development in axonal navigation at the ventral midline of the neural tube. In spinal cord development, it plays a role in guiding commissural axons probably by preventing premature sensitivity to Slit proteins thus inhibiting Slit signaling through ROBO1. It is required for hindbrain axon midline crossing. Defects in ROBO3 are a cause of familial horizontal gaze palsy with progressive scoliosis (HGPPS).

## Storage

**Storage:**  
Store at -20°C. Stable for one year after shipment.  
**Storage Buffer:**  
PBS with 0.02% sodium azide and 50% glycerol pH 7.3.  
Aliquoting is unnecessary for -20°C storage

For technical support and original validation data for this product please contact:

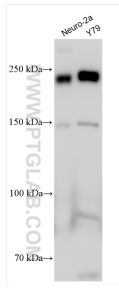
T: 4006900926

E: [Proteintech-CN@ptglab.com](mailto:Proteintech-CN@ptglab.com)

W: [ptgcn.com](http://ptgcn.com)

**This product is exclusively available under Proteintech Group brand and is not available to purchase from any other manufacturer.**

## Selected Validation Data



Various lysates were subjected to SDS PAGE followed by western blot with 11982-1-AP (ROBO3 antibody) at dilution of 1:1000 incubated at room temperature for 1.5 hours.