

For Research Use Only

# POP1 Polyclonal antibody, PBS Only

Catalog Number: 12029-1-PBS

Featured Product



## Basic Information

**Catalog Number:**

12029-1-PBS

**Size:**

1 mg/ml

**Source:**

Rabbit

**Isotype:**

IgG

**Immunogen Catalog Number:**

AG2660

**GenBank Accession Number:**

BC011529

**GeneID (NCBI):**

10940

**UNIPROT ID:**

Q99575

**Full Name:**

processing of precursor 1,  
ribonuclease P/MRP subunit (S.  
cerevisiae)

**Calculated MW:**

1024 aa, 115 kDa

**Observed MW:**

115 kDa

**Purification Method:**

Antigen affinity purification

## Applications

**Tested Applications:**

WB, IHC, IF/ICC, IP, Indirect ELISA

**Species Specificity:**

human, mouse, rat

## Background Information

Processing of Precursor 1 (POP1), a core component of RNase subunits, is an autoantigen in patients with connective tissue disease and is involved in suppressing inflammation.

## Storage

**Storage:**

Store at -80°C.

The product is shipped with ice packs. Upon receipt, store it immediately at -80°C

**Storage Buffer:**

PBS Only

For technical support and original validation data for this product please contact:

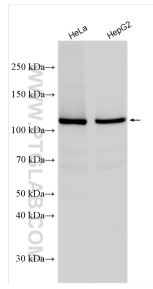
T: 4006900926

E: [Proteintech-CN@ptglab.com](mailto:Proteintech-CN@ptglab.com)

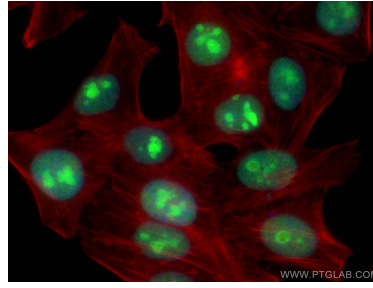
W: [ptgcn.com](http://ptgcn.com)

This product is exclusively available under Proteintech Group brand and is not available to purchase from any other manufacturer.

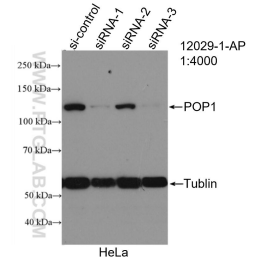
## Selected Validation Data



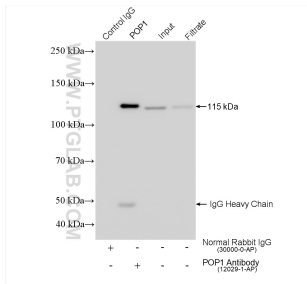
Various lysates were subjected to SDS PAGE followed by western blot with 12029-1-AP (POP1 antibody) at dilution of 1:8000 incubated at room temperature for 1.5 hours. This data was developed using the same antibody clone with 12029-1-PBS in a different storage buffer formulation.



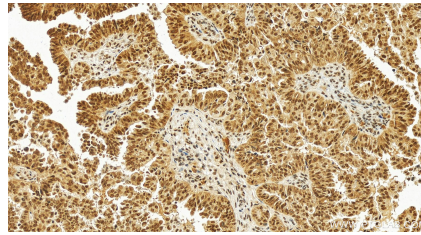
Immunofluorescent analysis of (4% PFA) fixed HepG2 cells using POP1 antibody (12029-1-AP) at dilution of 1:200 and CoraLite@488-Conjugated AffiniPure Goat Anti-Rabbit IgG(H+L), CL594-Phalloidin (red). This data was developed using the same antibody clone with 12029-1-PBS in a different storage buffer formulation.



WB result of POP1 antibody (12029-1-AP; 1:4000; incubated at room temperature for 1.5 hours) with sh-Control and sh-POP1 transfected HeLa cells. This data was developed using the same antibody clone with 12029-1-PBS in a different storage buffer formulation.



IP result of anti-POP1 (IP:12029-1-AP, 4ug; Detection:12029-1-AP 1:8000) with HeLa cells lysate 1560 ug. This data was developed using the same antibody clone with 12029-1-PBS in a different storage buffer formulation.



Immunohistochemical analysis of paraffin-embedded human ovary cancer tissue slide using 12029-1-AP (POP1 antibody) at dilution of 1:800 (under 20x lens). Heat mediated antigen retrieval with Tris-EDTA buffer (pH 9.0). This data was developed using the same antibody clone with 12029-1-PBS in a different storage buffer formulation.