

For Research Use Only

# KRAS Polyclonal antibody

Catalog Number: 12063-1-AP

Featured Product

115 Publications



## Basic Information

### Catalog Number:

12063-1-AP

### Size:

650 µg/ml

### Source:

Rabbit

### Isotype:

IgG

### Immunogen Catalog Number:

AG2700

### GenBank Accession Number:

BC013572

### GeneID (NCBI):

3845

### UNIPROT ID:

P01116

### Full Name:

v-Ki-ras2 Kirsten rat sarcoma viral oncogene homolog

### Calculated MW:

188 aa, 21 kDa

### Observed MW:

21 kDa

### Purification Method:

Antigen affinity purification

### Recommended Dilutions:

WB 1:5000-1:50000

IP 0.5-4.0 µg for 1.0-3.0 mg of total protein lysate

IHC 1:400-1:1600

IF 1:200-1:800

## Applications

### Tested Applications:

FC, IF/ICC, IHC, IP, WB, ELISA

### Cited Applications:

IF, IHC, IP, WB

### Species Specificity:

human, mouse, rat

### Cited Species:

human, chicken, rat, mouse

**Note-IHC: suggested antigen retrieval with TE buffer pH 9.0; (\*) Alternatively, antigen retrieval may be performed with citrate buffer pH 6.0**

### Positive Controls:

**WB:** HEK-293 cells, human brain tissue, human kidney tissue, mouse kidney tissue, rat kidney tissue, A549 cells, rat liver tissue, HeLa cells, mouse brain tissue, rat brain tissue

**IP:** HeLa cells,

**IHC:** human lung cancer tissue, human kidney tissue, human pancreas cancer tissue

**IF:** HeLa cells,

## Background Information

KRAS, also called p21, is a member of the Ras superfamily of proteins. It is located on human chromosome 12, and contains four coding exons and a 5' non-coding exon (PMID: 12778136). KRAS is a membrane-anchored guanosine triphosphate/guanosine diphosphate (GTP/GDP)-binding protein and is widely expressed in most human cells. Like other members of the Ras family, the KRAS protein is a GTPase, and it is involved in intracellular signal transduction and mainly responsible for EGFR-signaling activation (PMID: 19117687). KRAS mutations have been found in various malignancies, including lung adenocarcinoma, mucinous adenoma, ductal carcinoma of the pancreas and colorectal carcinoma.

## Notable Publications

Author	Pubmed ID	Journal	Application
Wang Jiang	33052229	Theranostics	WB,IHC
Linyu Sun	34555354	Mol Cell	WB
Makiko Tsuboi	28912272	J Biol Chem	WB

## Storage

### Storage:

Store at -20°C. Stable for one year after shipment.

### Storage Buffer:

PBS with 0.02% sodium azide and 50% glycerol pH 7.3.

Aliquoting is unnecessary for -20°C storage

For technical support and original validation data for this product please contact:

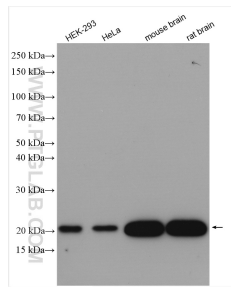
T: 4006900926

E: Proteintech-CN@ptglab.com

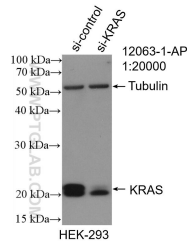
W: ptgcn.com

**This product is exclusively available under Proteintech Group brand and is not available to purchase from any other manufacturer.**

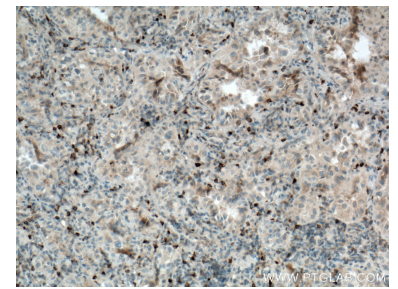
## Selected Validation Data



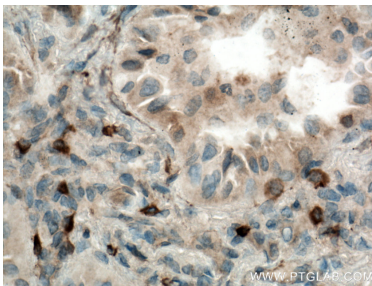
Various lysates were subjected to SDS PAGE followed by western blot with 12063-1-AP (KRAS antibody) at dilution of 1:10000 incubated at room temperature for 1.5 hours.



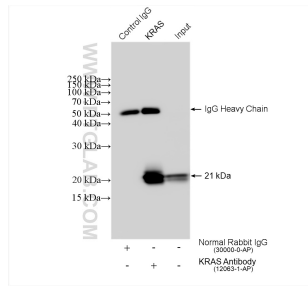
WB result of KRAS antibody (12063-1-AP; 1:2000; incubated at room temperature for 1.5 hours) with sh-Control and sh-KRAS transfected HEK-293 cells.



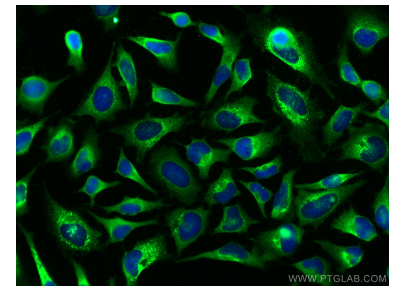
Immunohistochemical analysis of paraffin-embedded human lung cancer tissue slide using 12063-1-AP (KRAS antibody) at dilution of 1:800 (under 10x lens. Heat mediated antigen retrieval with Tris-EDTA buffer (pH 9.0).



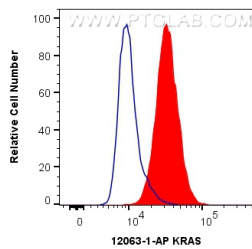
Immunohistochemical analysis of paraffin-embedded human lung cancer tissue slide using 12063-1-AP (KRAS antibody) at dilution of 1:800 (under 40x lens. Heat mediated antigen retrieval with Tris-EDTA buffer (pH 9.0).



IP result of anti-KRAS (IP:12063-1-AP, 4ug; Detection:12063-1-AP 1:10000) with HeLa cells lysate 1280 ug.



Immunofluorescent analysis of (-20°C Methanol) fixed HeLa cells using KRAS antibody (12063-1-AP) at dilution of 1:400 and CoraLite®488-Conjugated AffiniPure Goat Anti-Rabbit IgG(H+L).



1X10<sup>6</sup> HeLa cells were intracellularly stained with 0.4 ug Anti-Human KRAS (12063-1-AP) and CoraLite®488-Conjugated AffiniPure Goat Anti-Rabbit IgG(H+L) at dilution 1:1000 (red), or 0.4 ug Control Antibody. Cells were fixed with 4% PFA and permeabilized with Flow Cytometry Perm Buffer (PF00011-C).