

For Research Use Only

ETS1 Polyclonal antibody

Catalog Number: 12118-1-AP

Featured Product

16 Publications



Basic Information

Catalog Number:

12118-1-AP

Concentration:

400 ug/ml

Source:

Rabbit

Isotype:

IgG

Immunogen Catalog Number:

AG2127

GenBank Accession Number:

BC017314

GeneID (NCBI):

2113

UNIPROT ID:

P14921

Full Name:

v-ets erythroblastosis virus E26
oncogene homolog 1 (avian)

Calculated MW:

441 aa, 50 kDa

Observed MW:

50 kDa

Purification Method:

Antigen affinity purification

Recommended Dilutions:

WB 1:1000-1:4000

IHC 1:250-1:1000

IF/ICC 1:200-1:800

Applications

Tested Applications:

WB, IHC, IF/ICC, ELISA

Cited Applications:

WB, IF

Species Specificity:

human, mouse, rat

Cited Species:

human, mouse, rat, sheep

Positive Controls:

WB : Jurkat cells, mouse thymus tissue, Raji cells

IHC : rat spleen tissue, mouse spleen tissue, rat lung
tissue

IF/ICC : A431 cells,

**Note-IHC: suggested antigen retrieval with
TE buffer pH 9.0; (*) Alternatively, antigen
retrieval may be performed with citrate
buffer pH 6.0**

Background Information

ETS1 is a member of the ETS family of transcription factors, which are defined by the presence of a conserved ETS DNA-binding domain that recognizes the core consensus DNA sequence GGAA/T in target genes. ETS1 is a nuclear protein and primarily acts as a transcriptional activator, though it can also repress gene transcription. Since it is primarily expressed in lymphocytes, it plays several critical roles in immunity. In addition, it is important for angiogenesis. Since cells express several Ets proteins at the same time, functional redundancy is possible. This is particularly shown for the so-called housekeeping genes where several Ets factors were found to occupy the proximal promoters in vivo. The ETS1 protein exists as three isoforms: ETS1-p51, ETS1-p42, ETS1-p27 ranging in size from 27 to 51 kDa.

Notable Publications

Author	Pubmed ID	Journal	Application
Qiong Zhang	34545078	Nat Commun	WB
Yang Duan	27626484	Oncotarget	WB
Jing Li	34820381	Front Cell Dev Biol	WB

Storage

Storage:

Store at -20°C. Stable for one year after shipment.

Storage Buffer:

PBS with 0.02% sodium azide and 50% glycerol, pH7.3

Aliquoting is unnecessary for -20°C storage

For technical support and original validation data for this product please contact:

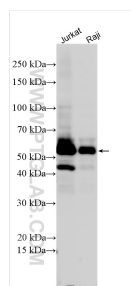
T: 4006900926

E: Proteintech-CN@ptglab.com

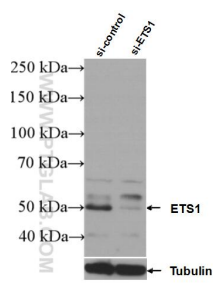
W: ptgcn.com

This product is exclusively available under Proteintech Group brand and is not available to purchase from any other manufacturer.

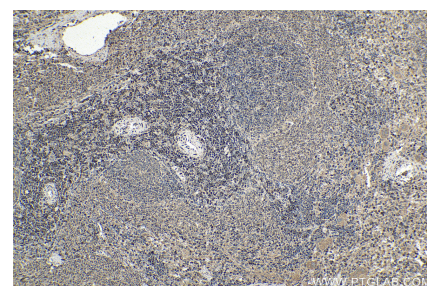
Selected Validation Data



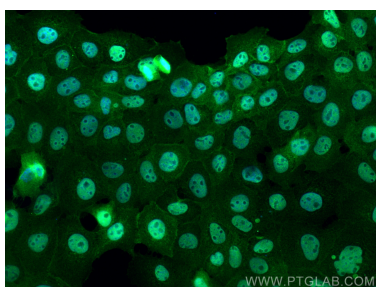
Various lysates were subjected to SDS PAGE followed by western blot with 12118-1-AP (ETS1 antibody) at dilution of 1:2000 incubated at room temperature for 1.5 hours.



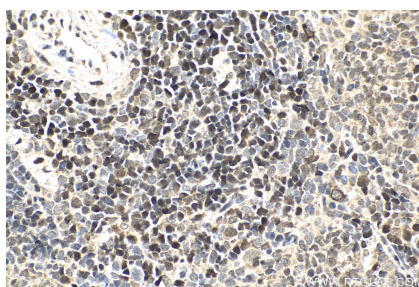
WB result of ETS1 antibody (12118-1-AP; 1:3000; incubated at room temperature for 1.5 hours) with sh-Control and sh-ETS1 transfected Jurkat cells.



Immunohistochemical analysis of paraffin-embedded rat spleen tissue slide using 12118-1-AP (ETS1 antibody) at dilution of 1:500 (under 10x lens). Heat mediated antigen retrieval with Tris-EDTA buffer (pH 9.0).



Immunofluorescent analysis of (4% PFA) fixed A431 cells using ETS1 antibody (12118-1-AP) at dilution of 1:400 and CoraLite® 488-Conjugated AffiniPure Goat Anti-Rabbit IgG(H+L).



Immunohistochemical analysis of paraffin-embedded rat spleen tissue slide using 12118-1-AP (ETS1 antibody) at dilution of 1:500 (under 40x lens). Heat mediated antigen retrieval with Tris-EDTA buffer (pH 9.0).