

For Research Use Only

WSB2 Polyclonal antibody

Catalog Number: 12124-2-AP

Featured Product

4 Publications



Basic Information

Catalog Number:

12124-2-AP

Size:

400 µg/ml

Source:

Rabbit

Isotype:

IgG

Immunogen Catalog Number:

AG2768

GenBank Accession Number:

BC015887

GeneID (NCBI):

55884

UNIPROT ID:

Q9NYS7

Full Name:

WD repeat and SOCS box-containing

2

Calculated MW:

404 aa, 45 kDa

Observed MW:

50 kDa

Purification Method:

Antigen affinity purification

Recommended Dilutions:

WB 1:500-1:2000

IP 0.5-4.0 µg for 1.0-3.0 mg of total protein lysate

IF/ICC 1:50-1:500

Applications

Tested Applications:

WB, IF/ICC, IP, ELISA

Cited Applications:

WB, IHC, IP, CoIP

Species Specificity:

human, mouse, rat

Cited Species:

human

Positive Controls:

WB: PC-3 cells, rat kidney tissue, mouse kidney tissue, human brain tissue

IP: mouse kidney tissue,

IF/ICC: HEK-293 cells,

Background Information

WSB2, also named SBA2, encodes WD repeat and SOCS box-containing protein 2. WSB2 may be a substrate-recognition component of an E3 ubiquitin ligase complex which mediates the ubiquitination and subsequent proteasomal degradation of target proteins. WSB2 is a novel protein supposed to be involved in male- and female-specific gonadal development, and also a regulator of IL-21 receptor expression and IL21-induced signal transduction. WSB2 might be a promising novel biomarker of cell differentiation in colorectal cancer and its biological functions need further studies.

Notable Publications

Author	Pubmed ID	Journal	Application
Gautier Stoll	31069148	Oncoimmunology	IHC
Ke Lu	37943017	Elife	IP
Zhiqin Yang	36866240	J Oncol	WB,IHC,CoIP

Storage

Storage:

Store at -20°C. Stable for one year after shipment.

Storage Buffer:

PBS with 0.02% sodium azide and 50% glycerol pH 7.3.

Aliquoting is unnecessary for -20°C storage

For technical support and original validation data for this product please contact:

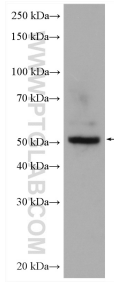
T: 4006900926

E: Proteintech-CN@ptglab.com

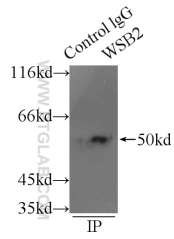
W: ptgcn.com

This product is exclusively available under Proteintech Group brand and is not available to purchase from any other manufacturer.

Selected Validation Data



PC-3 cells were subjected to SDS PAGE followed by western blot with 12124-2-AP (WSB2 antibody) at dilution of 1:1000 incubated at room temperature for 1.5 hours.



IP result of anti-WSB2 (IP:12124-2-AP, 3ug; Detection:12124-2-AP 1:800) with mouse kidney tissue lysate 6000ug.

Immunofluorescent analysis of (-20°C Ethanol) fixed HEK-293 cells using WSB2 antibody (12124-2-AP) at dilution of 1:200 and CoraLite®488-Conjugated AffiniPure Goat Anti-Rabbit IgG(H+L).