

For Research Use Only

# KIF2C Polyclonal antibody

Catalog Number: 12139-1-AP **7 Publications**



## Basic Information

**Catalog Number:**

12139-1-AP

**Size:**

133 µg/ml

**Source:**

Rabbit

**Isotype:**

IgG

**Immunogen Catalog Number:**

AG2786

**GenBank Accession Number:**

BC014924

**GeneID (NCBI):**

11004

**UNIPROT ID:**

Q99661

**Full Name:**

kinesin family member 2C

**Calculated MW:**

725 aa, 81 kDa

**Observed MW:**

81 kDa

**Purification Method:**

Antigen affinity purification

**Recommended Dilutions:**

IP 0.5-4.0 µg for 1.0-3.0 mg of total protein lysate

IF/ICC 1:20-1:200

## Applications

**Tested Applications:**

IF/ICC, IP, ELISA

**Cited Applications:**

WB, IHC, IF

**Species Specificity:**

human, mouse, rat

**Cited Species:**

human, mouse

**Positive Controls:**

IP: mouse testis tissue,

IF/ICC: HeLa cells,

## Background Information

### Notable Publications

Author	Pubmed ID	Journal	Application
Ran Wei	34568334	Front Cell Dev Biol	IF
Lanfen An	34650608	Stem Cells Int	WB, IHC
Rui-Chao Chai	31157866	Carcinogenesis	

## Storage

**Storage:**

Store at -20°C. Stable for one year after shipment.

**Storage Buffer:**

PBS with 0.02% sodium azide and 50% glycerol pH 7.3.

Aliquoting is unnecessary for -20°C storage

For technical support and original validation data for this product please contact:

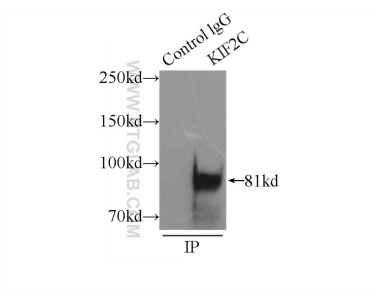
T: 4006900926

E: [Proteintech-CN@ptglab.com](mailto:Proteintech-CN@ptglab.com)

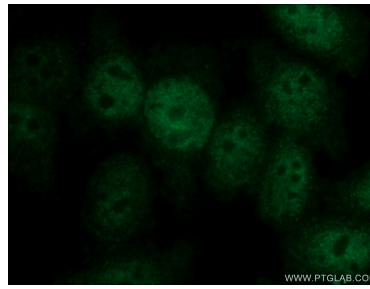
W: [ptgcn.com](http://ptgcn.com)

**This product is exclusively available under Proteintech Group brand and is not available to purchase from any other manufacturer.**

## Selected Validation Data



IP result of anti-KIF2C (IP:12139-1-AP, 3ug;  
Detection:12139-1-AP 1:500) with mouse testis  
tissue lysate 8000ug.



Immunofluorescent analysis of HeLa cells using  
12139-1-AP (KIF2C antibody) at dilution of 1:50 and  
Alexa Fluor 488-conjugated Goat Anti-Rabbit  
IgG(H+L).