

For Research Use Only

# PTS Polyclonal antibody

Catalog Number: 12150-1-AP

Featured Product

3 Publications



## Basic Information

**Catalog Number:**

12150-1-AP

**Size:**

400 µg/ml

**Source:**

Rabbit

**Isotype:**

IgG

**Immunogen Catalog Number:**

AG2798

**GenBank Accession Number:**

BC009686

**GeneID (NCBI):**

5805

**UNIPROT ID:**

Q03393

**Full Name:**

6-pyruvoyltetrahydropterin synthase

**Calculated MW:**

145 aa, 16 kDa

**Observed MW:**

16 kDa

**Purification Method:**

Antigen affinity purification

**Recommended Dilutions:**

WB 1:500-1:1000

IHC 1:20-1:200

IF/ICC 1:50-1:500

## Applications

**Tested Applications:**

WB, IHC, IF/ICC, ELISA

**Cited Applications:**

WB, IHC

**Species Specificity:**

human, mouse, rat

**Cited Species:**

human, mouse

**Note-IHC: suggested antigen retrieval with TE buffer pH 9.0; (\*) Alternatively, antigen retrieval may be performed with citrate buffer pH 6.0**

**Positive Controls:**

WB : human brain tissue,

IHC : human gliomas tissue,

IF/ICC : HeLa cells,

## Background Information

### Notable Publications

Author	Pubmed ID	Journal	Application
Wei Ma	36248333	Transl Lung Cancer Res	WB,IHC
Qin Zhao	31628042	Mol Cell	WB
Angus Lindsay	33580591	Acta Physiol (Oxf)	WB

## Storage

**Storage:**

Store at -20°C. Stable for one year after shipment.

**Storage Buffer:**

PBS with 0.02% sodium azide and 50% glycerol pH 7.3.

Aliquoting is unnecessary for -20°C storage

For technical support and original validation data for this product please contact:

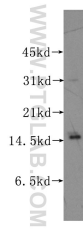
T: 4006900926

E: Proteintech-CN@ptglab.com

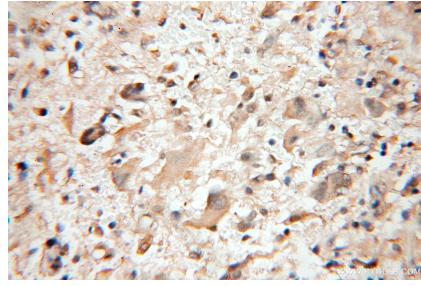
W: ptgcn.com

**This product is exclusively available under Proteintech Group brand and is not available to purchase from any other manufacturer.**

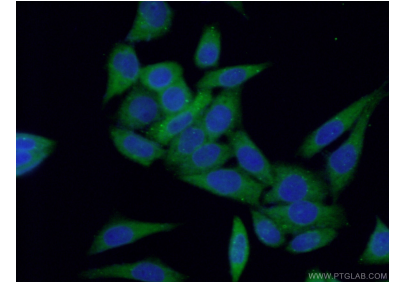
## Selected Validation Data



human brain tissue were subjected to SDS PAGE followed by western blot with 12150-1-AP (PTS antibody) at dilution of 1:200 incubated at room temperature for 1.5 hours.



Immunohistochemical analysis of paraffin-embedded human gliomas using 12150-1-AP (PTS antibody) at dilution of 1:50 (under 10x lens).



Immunofluorescent analysis of (-20°C Ethanol) fixed HeLa cells using 12150-1-AP (PTS antibody) at dilution of 1:50 and Alexa Fluor 488-conjugated AffiniPure Goat Anti-Rabbit IgG(H+L).