

For Research Use Only

Syntaxin 8 Polyclonal antibody

Catalog Number: 12206-1-AP

Featured Product

2 Publications



Basic Information

Catalog Number:

12206-1-AP

Size:

550 µg/ml

Source:

Rabbit

Isotype:

IgG

Immunogen Catalog Number:

AG2850

GenBank Accession Number:

BC009713

GeneID (NCBI):

9482

UNIPROT ID:

Q9UNK0

Full Name:

syntaxin 8

Calculated MW:

236 aa, 27 kDa

Observed MW:

27 kDa

Purification Method:

Antigen affinity purification

Recommended Dilutions:

WB 1:500-1:1000

IP 0.5-4.0 µg for 1.0-3.0 mg of total protein lysate

IF/ICC 1:10-1:100

Applications

Tested Applications:

WB, IF/ICC, IP, ELISA

Cited Applications:

WB, ColP

Species Specificity:

human, mouse, rat

Cited Species:

mouse, rat

Positive Controls:

WB : human heart tissue, A375 cells, human brain tissue, human kidney tissue, human liver tissue, human lung tissue, human placenta tissue, mouse pancreas tissue

IP : A375 cells,

IF/ICC : HepG2 cells,

Background Information

Syntaxin 8 (STX8), also known as CIP-1-associated regulator of cyclin B (CARB), is a protein belonging to the syntaxin family. The gene of STX8 maps to chromosomal band 17p12 and it encodes a 236-amino-acid protein containing 1 t-SNARE coiled-coil homology domain. STX8 mRNA is broadly expressed in multiple human tissues, including the heart, brain, kidney, liver, lung, placenta, skeletal muscle, spleen, and pancreas (PMID: 10198254). STX8 is involved in protein trafficking from early to late endosomes via vesicle fusion and exocytosis.

Notable Publications

Author	Pubmed ID	Journal	Application
Mona Abed	30951545	PLoS One	
Min Li	36053215	J Cell Biol	WB, ColP

Storage

Storage:

Store at -20°C. Stable for one year after shipment.

Storage Buffer:

PBS with 0.02% sodium azide and 50% glycerol pH 7.3.

Aliquoting is unnecessary for -20°C storage

For technical support and original validation data for this product please contact:

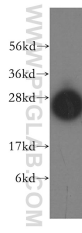
T: 4006900926

E: Proteintech-CN@ptglab.com

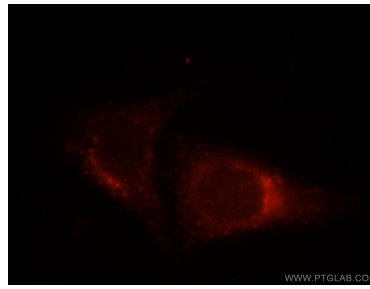
W: ptgcn.com

This product is exclusively available under Proteintech Group brand and is not available to purchase from any other manufacturer.

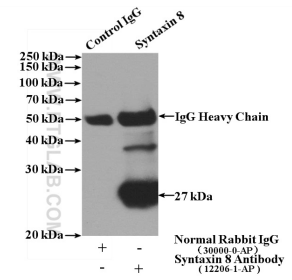
Selected Validation Data



human heart tissue were subjected to SDS PAGE followed by western blot with 12206-1-AP (Syntaxin 8 antibody) at dilution of 1:500 incubated at room temperature for 1.5 hours.



Immunofluorescent analysis of HepG2 cells, using STX8 antibody 12206-1-AP at 1:25 dilution and Rhodamine-labeled goat anti-rabbit IgG (red).



IP result of anti-Syntaxin 8 (IP:12206-1-AP, 4ug; Detection:12206-1-AP 1:500) with A375 cells lysate 3600ug.