

For Research Use Only

# PEPD Polyclonal antibody

Catalog Number: 12218-1-AP

Featured Product

2 Publications



## Basic Information

**Catalog Number:**

12218-1-AP

**Size:**

500 µg/ml

**Source:**

Rabbit

**Isotype:**

IgG

**Immunogen Catalog Number:**

AG2842

**GenBank Accession Number:**

BC015027

**GeneID (NCBI):**

5184

**UNIPROT ID:**

P12955

**Full Name:**

peptidase D

**Calculated MW:**

493 aa, 55 kDa

**Observed MW:**

55 kDa

**Purification Method:**

Antigen affinity purification

**Recommended Dilutions:**

WB 1:500-1:3000

IHC 1:100-1:800

IF/ICC 1:50-1:500

## Applications

**Tested Applications:**

WB, IHC, IF/ICC, ELISA

**Cited Applications:**

IHC

**Species Specificity:**

human, mouse

**Cited Species:**

human

**Note-IHC: suggested antigen retrieval with TE buffer pH 9.0; (\*) Alternatively, antigen retrieval may be performed with citrate buffer pH 6.0**

**Positive Controls:**

WB : HEK-293 cells, MDA-MB-453s cells, mouse skin tissue, HeLa cells, HepG2 cells, SH-SY5Y cells

IHC : human lung cancer tissue,

IF/ICC : HepG2 cells,

## Background Information

PEPD, also named as PRD, Prolidase, X-Pro dipeptidase, Imidodipeptidase, Peptidase D and Proline dipeptidase, belongs to the peptidase M24B family and Eukaryotic-type prolidase subfamily. PEPD splits dipeptides with a prolyl or hydroxyprolyl residue in the C-terminal position. It plays an important role in collagen metabolism because the high level of iminoacids in collagen. Defects in PEPD are a cause of prolidase deficiency (PD). PEPD is considered as the most promising candidate genes for altering AAA risk, based on gene function, association evidence, gene expression, and protein expression.(PMID:21247474)

## Notable Publications

Author	Pubmed ID	Journal	Application
Aydemir Koçarslan	27387023	Arch Med Res	IHC
Lillvis John H JH	21247474	BMC Med Genet	IHC

## Storage

**Storage:**

Store at -20°C. Stable for one year after shipment.

**Storage Buffer:**

PBS with 0.02% sodium azide and 50% glycerol pH 7.3.

Aliquoting is unnecessary for -20°C storage

For technical support and original validation data for this product please contact:

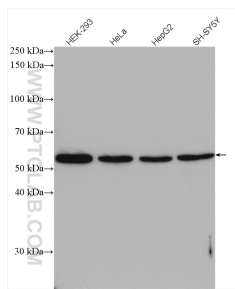
T: 4006900926

E: Proteintech-CN@ptglab.com

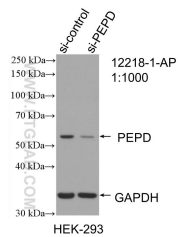
W: ptgcn.com

**This product is exclusively available under Proteintech Group brand and is not available to purchase from any other manufacturer.**

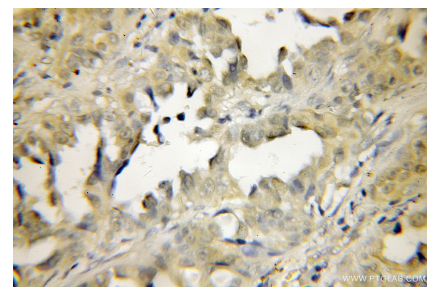
## Selected Validation Data



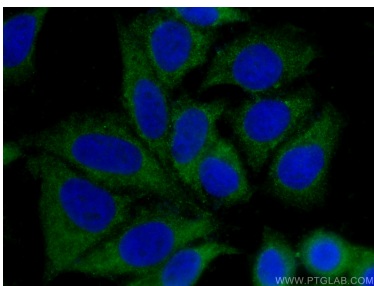
Various lysates were subjected to SDS PAGE followed by western blot with 12218-1-AP (PEPD antibody) at dilution of 1:1000 incubated at room temperature for 1.5 hours.



WB result of PEPD antibody (12218-1-AP; 1:1000; incubated at room temperature for 1.5 hours) with sh-Control and sh-PEPD transfected HEK-293 cells.



Immunohistochemical analysis of paraffin-embedded human lung cancer using 12218-1-AP (PEPD antibody) at dilution of 1:50 (under 10x lens).



Immunofluorescent analysis of (-20°C Ethanol) fixed HepG2 cells using 12218-1-AP (PEPD antibody) at dilution of 1:100 and CoraLite488-Conjugated AffiniPure Goat Anti-Rabbit IgG(H+L).