

For Research Use Only

EIF4E2 Polyclonal antibody

Catalog Number: 12227-1-AP **4 Publications**



Basic Information

Catalog Number:

12227-1-AP

Size:

600 µg/ml

Source:

Rabbit

Isotype:

IgG

Immunogen Catalog Number:

AG2864

GenBank Accession Number:

BC021690

GeneID (NCBI):

9470

UNIPROT ID:

O60573

Full Name:

eukaryotic translation initiation

factor 4E family member 2

Calculated MW:

245 aa, 28 kDa

Observed MW:

28 kDa

Purification Method:

Antigen affinity purification

Recommended Dilutions:

WB 1:500-1:1000

IP 0.5-4.0 ug for 1.0-3.0 mg of total

protein lysate

IHC 1:50-1:500

Applications

Tested Applications:

IHC, IP, WB, ELISA

Cited Applications:

IHC, RIP, WB

Species Specificity:

human, mouse, rat

Cited Species:

human

Note-IHC: suggested antigen retrieval with TE buffer pH 9.0; (*) Alternatively, antigen retrieval may be performed with citrate buffer pH 6.0

Positive Controls:

WB : HeLa cells, MCF-7 cells, mouse kidney tissue

IP : MCF-7 cells,

IHC : human breast cancer tissue,

Background Information

Notable Publications

Author	Pubmed ID	Journal	Application
Yoichiro Sugimoto	36097292	Nat Struct Mol Biol	WB
Limei Zou	35756894	iScience	WB
Hao Wang	37798282	Cell Death Dis	WB, RIP

Storage

Storage:

Store at -20°C. Stable for one year after shipment.

Storage Buffer:

PBS with 0.02% sodium azide and 50% glycerol pH 7.3.

Aliquoting is unnecessary for -20°C storage

For technical support and original validation data for this product please contact:

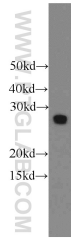
T: 4006900926

E: Proteintech-CN@ptglab.com

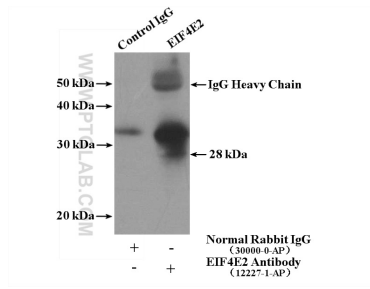
W: ptgcn.com

This product is exclusively available under Proteintech Group brand and is not available to purchase from any other manufacturer.

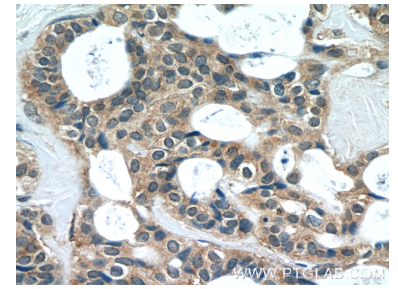
Selected Validation Data



HeLa cells were subjected to SDS PAGE followed by western blot with 12227-1-AP (EIF4E2 antibody) at dilution of 1:500 incubated at room temperature for 1.5 hours.



IP result of anti-EIF4E2 (IP:12227-1-AP, 4ug; Detection:12227-1-AP 1:500) with MCF-7 cells lysate 1280ug.



Immunohistochemical analysis of paraffin-embedded human breast cancer tissue slide using 12227-1-AP (EIF4E2 Antibody) at dilution of 1:50 (under 40x lens).