

For Research Use Only

SLC12A8 Polyclonal antibody

Catalog Number:12242-1-AP



Basic Information

Catalog Number: 12242-1-AP	GenBank Accession Number: BC020506	Purification Method: Antigen affinity purification
Size: 180 ug/ml	GeneID (NCBI): 84561	Recommended Dilutions: WB 1:500-1:1000
Source: Rabbit	UNIPROT ID: A0AV02	
Isotype: IgG	Full Name: solute carrier family 12 (potassium/chloride transporters), member 8	
Immunogen Catalog Number: AG2886	Calculated MW: 714 aa, 80 kDa	
	Observed MW: 70 KDa	

Applications

Tested Applications: WB, ELISA	Positive Controls: WB: 37°C incubated mouse kidney tissue,
Species Specificity: human, mouse	

Background Information

Solute carrier family 12 member 8 (SLC12A8) belongs to the SLC12 gene family, which consists of electroneutral cation-chloride coupled cotransporters. It is highly expressed in small intestine and pancreas and moderately expressed in liver and white adipose tissue (PMID: 31131364). SLC12A8 may be a useful biomarker for the early diagnosis and treatment of bladder cancer (PMID: 33364434).

Storage

Storage:
Store at -20°C. Stable for one year after shipment.
Storage Buffer:
PBS with 0.02% sodium azide and 50% glycerol pH 7.3.
Aliquoting is unnecessary for -20°C storage

For technical support and original validation data for this product please contact:

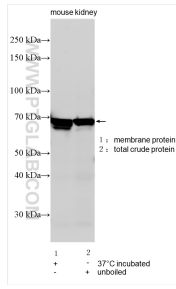
T: 4006900926

E: Proteintech-CN@ptglab.com

W: ptgcn.com

This product is exclusively available under Proteintech Group brand and is not available to purchase from any other manufacturer.

Selected Validation Data



Various lysates were subjected to SDS PAGE followed by western blot with 12242-1-AP (SLC12A8 antibody) at dilution of 1:500 incubated at room temperature for 1.5 hours.