

For Research Use Only

# ETS2 Polyclonal antibody

Catalog Number: 12280-1-AP **2 Publications**



## Basic Information

**Catalog Number:**

12280-1-AP

**Size:**

800 µg/ml

**Source:**

Rabbit

**Isotype:**

IgG

**Immunogen Catalog Number:**

AG2929

**GenBank Accession Number:**

BC017040

**GeneID (NCBI):**

2114

**UNIPROT ID:**

P15036

**Full Name:**

v-ets erythroblastosis virus E26 oncogene homolog 2 (avian)

**Calculated MW:**

469 aa, 53 kDa

**Observed MW:**

53 kDa

**Purification Method:**

Antigen affinity purification

**Recommended Dilutions:**

WB 1:500-1:2000

IP 0.5-4.0 µg for 1.0-3.0 mg of total protein lysate

IHC 1:50-1:500

## Applications

**Tested Applications:**

IHC, IP, WB, ELISA

**Cited Applications:**

WB

**Species Specificity:**

human, mouse, rat

**Cited Species:**

human

**Note-IHC: suggested antigen retrieval with TE buffer pH 9.0; (\*) Alternatively, antigen retrieval may be performed with citrate buffer pH 6.0**

**Positive Controls:**

**WB:** K-562 cells, HeLa cells, MCF-7 cells, mouse kidney tissue, PC-3 cells

**IP:** HeLa cells,

**IHC:** mouse spleen tissue, rat liver tissue

## Background Information

### Notable Publications

Author	Pubmed ID	Journal	Application
Yan Li	34702807	Cell Death Dis	WB
Yongheng Chen	36609474	Cell Death Dis	WB

## Storage

**Storage:**

Store at -20°C. Stable for one year after shipment.

**Storage Buffer:**

PBS with 0.02% sodium azide and 50% glycerol pH 7.3.

Aliquoting is unnecessary for -20°C storage

For technical support and original validation data for this product please contact:

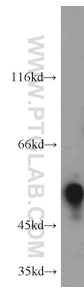
T: 4006900926

E: Proteintech-CN@ptglab.com

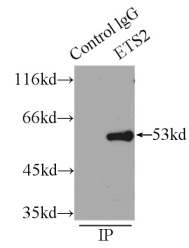
W: ptgcn.com

**This product is exclusively available under Proteintech Group brand and is not available to purchase from any other manufacturer.**

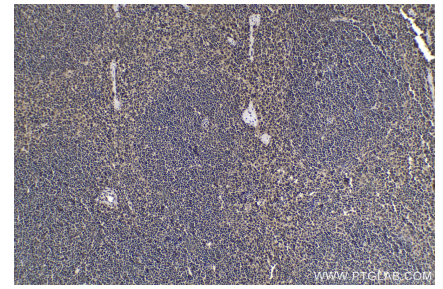
## Selected Validation Data



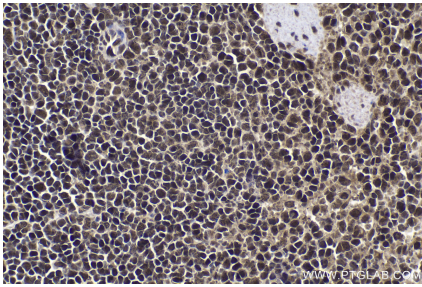
K-562 cells were subjected to SDS PAGE followed by western blot with 12280-1-AP (ETS2 antibody) at dilution of 1:1000 incubated at room temperature for 1.5 hours.



IP result of anti-ETS2 (IP:12280-1-AP, 3ug; Detection:12280-1-AP 1:600) with HeLa cells lysate 5000ug.



Immunohistochemical analysis of paraffin-embedded mouse spleen tissue slide using 12280-1-AP (ETS2 antibody) at dilution of 1:200 (under 10x lens). Heat mediated antigen retrieval with Tris-EDTA buffer (pH 9.0).



Immunohistochemical analysis of paraffin-embedded mouse spleen tissue slide using 12280-1-AP (ETS2 antibody) at dilution of 1:200 (under 40x lens). Heat mediated antigen retrieval with Tris-EDTA buffer (pH 9.0).