

For Research Use Only

CYP4F11 Polyclonal antibody

Catalog Number:12286-1-AP

Featured Product

2 Publications



Basic Information

Catalog Number:

12286-1-AP

Size:

600 ug/ml

Source:

Rabbit

Isotype:

IgG

Immunogen Catalog Number:

AG2906

GenBank Accession Number:

BC016853

GeneID (NCBI):

57834

UNIPROT ID:

Q9HBI6

Full Name:

cytochrome P450, family 4, subfamily F, polypeptide 11

Calculated MW:

524 aa, 60 kDa

Observed MW:

57 kDa

Purification Method:

Antigen affinity purification

Recommended Dilutions:

WB 1:1000-1:6000

IHC 1:200-1:800

IF/ICC 1:200-1:800

Applications

Tested Applications:

WB, IHC, IF/ICC, ELISA

Cited Applications:

WB, ChIP

Species Specificity:

human

Cited Species:

human

Note-IHC: suggested antigen retrieval with TE buffer pH 9.0; (*) Alternatively, antigen retrieval may be performed with citrate buffer pH 6.0

Positive Controls:

WB : A549 cells, human liver tissue, human kidney tissue, MCF-7 cells, mouse liver tissue

IHC : human liver cancer tissue, human bowen disease

IF/ICC : A549 cells,

Background Information

CYP4F11, also named as CYP11F11, belongs to the cytochrome P450 family. It is the lone CYP4F/A enzyme that effectively oxidized 3-hydroxypalmitate. It is the predominant catalyst of this fatty acid oxidation reaction in human liver. CYP4F11 is one of the primary human epidermal keratinocytes. It is positively regulated by multiple signaling pathways in HaCaT keratinocytes, including RXR and JNK signaling pathways. (PMID:19812349)

Notable Publications

Author	Pubmed ID	Journal	Application
Bell Jordan C JC	22011441	Drug Metab Dispos	ChIP
Wang Ying Y	19812349	Drug Metab Dispos	WB

Storage

Storage:

Store at -20°C. Stable for one year after shipment.

Storage Buffer:

PBS with 0.02% sodium azide and 50% glycerol pH 7.3.

Aliquoting is unnecessary for -20°C storage

For technical support and original validation data for this product please contact:

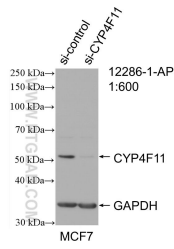
T: 4006900926

E: Proteintech-CN@ptglab.com

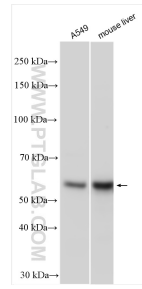
W: ptgcn.com

This product is exclusively available under Proteintech Group brand and is not available to purchase from any other manufacturer.

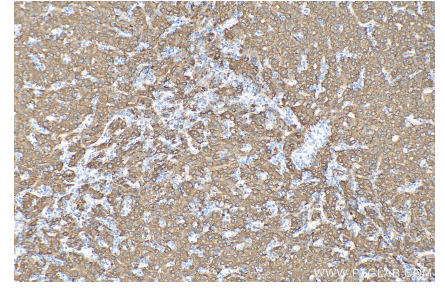
Selected Validation Data



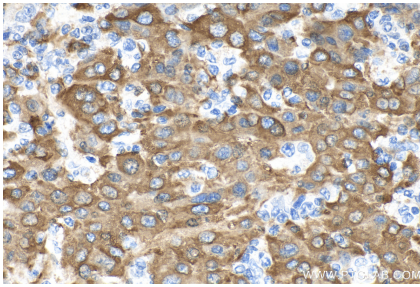
WB result of CYP4F11 antibody (12286-1-AP; 1:600; incubated at room temperature for 1.5 hours) with sh-Control and sh-CYP4F11 transfected MCF-7 cells.



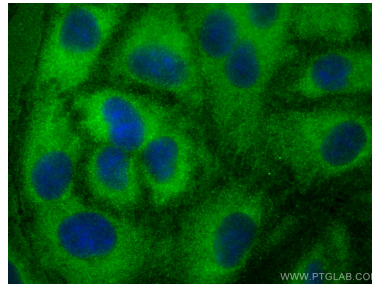
Various lysates were subjected to SDS PAGE followed by western blot with 12286-1-AP (CYP4F11 antibody) at dilution of 1:3000 incubated at room temperature for 1.5 hours.



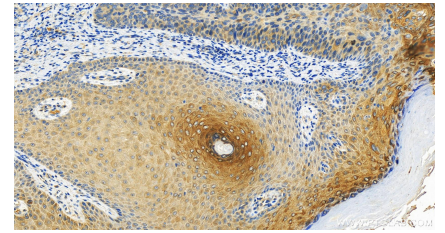
Immunohistochemical analysis of paraffin-embedded human liver cancer tissue slide using 12286-1-AP (CYP4F11 antibody) at dilution of 1:400 (under 10x lens). Heat mediated antigen retrieval with Tris-EDTA buffer (pH 9.0).



Immunohistochemical analysis of paraffin-embedded human liver cancer tissue slide using 12286-1-AP (CYP4F11 antibody) at dilution of 1:400 (under 40x lens). Heat mediated antigen retrieval with Tris-EDTA buffer (pH 9.0).



Immunofluorescent analysis of (-20°C Methanol) fixed A549 cells using CYP4F11 antibody (12286-1-AP) at dilution of 1:400 and CoraLite®488-Conjugated AffiniPure Goat Anti-Rabbit IgG(H+L).



Immunohistochemical analysis of paraffin-embedded human Bowen disease slide using 12286-1-AP (CYP4F11 antibody) at dilution of 1:600 (under 20x lens). Heat mediated antigen retrieval with Tris-EDTA buffer (pH 9.0).