

For Research Use Only

# SFXN1 Polyclonal antibody

Catalog Number:12296-1-AP

Featured Product

11 Publications



## Basic Information

**Catalog Number:**

12296-1-AP

**Size:**

400 µg/ml

**Source:**

Rabbit

**Isotype:**

IgG

**Immunogen Catalog Number:**

AG2985

**GenBank Accession Number:**

BC020517

**GeneID (NCBI):**

94081

**UNIPROT ID:**

Q9H9B4

**Full Name:**

sideroflexin 1

**Calculated MW:**

35.6 kDa

**Observed MW:**

30-35 kDa

**Purification Method:**

Antigen affinity purification

**Recommended Dilutions:**

WB 1:1000-1:6000

IP 0.5-4.0 µg for 1.0-3.0 mg of total protein lysate

IHC 1:50-1:500

## Applications

**Tested Applications:**

IHC, IP, WB, ELISA

**Cited Applications:**

WB, IHC, IF, IP

**Species Specificity:**

human, mouse, rat

**Cited Species:**

human, mouse, rat

**Note-IHC: suggested antigen retrieval with TE buffer pH 9.0; (\*) Alternatively, antigen retrieval may be performed with citrate buffer pH 6.0**

**Positive Controls:**

**WB:** MCF-7 cells, human brain tissue, mouse liver tissue, mouse brain tissue, rat brain tissue

**IP:** mouse brain tissue,

**IHC:** human breast cancer tissue, human kidney tissue

## Background Information

SFXN1, the founding member of the SLC56 family, was identified by positional cloning of the mutation in the flexed-tail mouse model with sideroblastic anemia. SFXN1 was recently identified as a mitochondrial serine transporter essential for one-carbon (1C) metabolism, a process in which folate species are generated and used in biosynthetic pathways required for cell proliferation. In HEK293 cells, SFXN1 is the most abundant isoform among the SFXNs.

## Notable Publications

| Author               | Pubmed ID | Journal       | Application |
|----------------------|-----------|---------------|-------------|
| Michelle Grace Acoba | 33730581  | Cell Rep      | WB          |
| Mariluz Soula        | 32778843  | Nat Chem Biol | WB          |
| Jing Zhang           | 35979359  | Front Immunol | WB          |

## Storage

**Storage:**

Store at -20°C. Stable for one year after shipment.

**Storage Buffer:**

PBS with 0.02% sodium azide and 50% glycerol pH 7.3.

Aliquoting is unnecessary for -20°C storage

For technical support and original validation data for this product please contact:

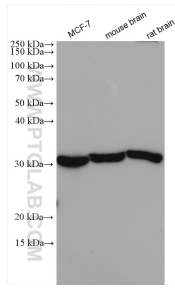
T: 4006900926

E: [Proteintech-CN@ptglab.com](mailto:Proteintech-CN@ptglab.com)

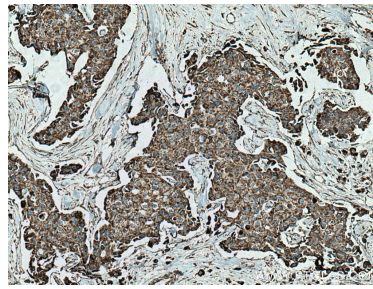
W: [ptgcn.com](http://ptgcn.com)

**This product is exclusively available under Proteintech Group brand and is not available to purchase from any other manufacturer.**

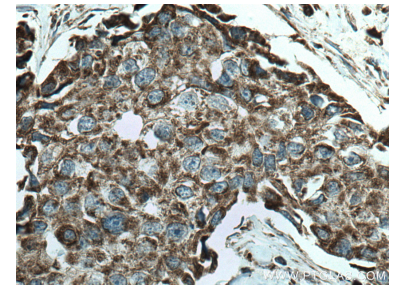
## Selected Validation Data



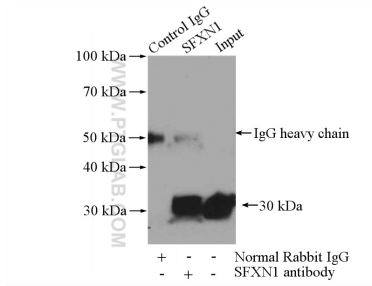
Various lysates were subjected to SDS PAGE followed by western blot with 12296-1-AP (SFXN1 antibody) at dilution of 1:3000 incubated at room temperature for 1.5 hours.



Immunohistochemical analysis of paraffin-embedded human breast cancer tissue slide using 12296-1-AP (SFXN1 antibody) at dilution of 1:200 (under 10x lens). Heat mediated antigen retrieval with Tris-EDTA buffer (pH 9.0).



Immunohistochemical analysis of paraffin-embedded human breast cancer tissue slide using 12296-1-AP (SFXN1 antibody) at dilution of 1:200 (under 40x lens). Heat mediated antigen retrieval with Tris-EDTA buffer (pH 9.0).



IP result of anti-SFXN1 (IP:12296-1-AP, 4 $\mu$ g; Detection:12296-1-AP 1:800) with mouse brain tissue lysate 4000 $\mu$ g.