

For Research Use Only

Hemoglobin Epsilon Polyclonal antibody



Catalog Number: 12361-1-AP

6 Publications

Basic Information

Catalog Number: 12361-1-AP	GenBank Accession Number: BC015537	Purification Method: Antigen affinity purification
Size: 450 µg/ml	GeneID (NCBI): 3046	Recommended Dilutions: WB 1:500-1:2000 IHC 1:20-1:200
Source: Rabbit	UNIPROT ID: P02100	
Isotype: IgG	Full Name: hemoglobin, epsilon 1	
Immunogen Catalog Number: AG3026	Calculated MW: 147 aa, 16 kDa	
	Observed MW: 12-16 kDa	

Applications

Tested Applications:

FC, IHC, WB, ELISA

Cited Applications:

IHC, WB

Species Specificity:

human, mouse, rat

Cited Species:

human, rat, mouse

Note-IHC: suggested antigen retrieval with TE buffer pH 9.0; (*) Alternatively, antigen retrieval may be performed with citrate buffer pH 6.0

Positive Controls:

WB : human placenta tissue, K-562 cells, mouse placenta tissue

IHC : human placenta tissue,

Background Information

The hemoglobin molecule is a tetramer consisting of two alpha- and two beta-globin-like chains. HBE1 (hemoglobin epsilon chain) is a beta-type chain of hemoglobin predominantly expressed during the embryonic stage (21321359). The HBE1 has been regarded as the best marker for fetal nucleated red blood cells (NRBCs). This antibody can be used to label and isolate fetal cells from maternal blood and may be useful in prenatal diagnosis (15906407).

Notable Publications

Author	Pubmed ID	Journal	Application
Wei Lilong L	23134622	Proteome Sci	WB
L Vian	24141720	Cell Death Differ	WB
Tetsuo Hirano	33340546	Biochim Biophys Acta Mol Cell Res	WB

Storage

Storage:

Store at -20°C. Stable for one year after shipment.

Storage Buffer:

PBS with 0.02% sodium azide and 50% glycerol pH 7.3.

Aliquoting is unnecessary for -20°C storage

For technical support and original validation data for this product please contact:

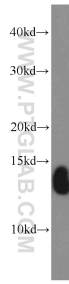
T: 4006900926

E: Proteintech-CN@ptglab.com

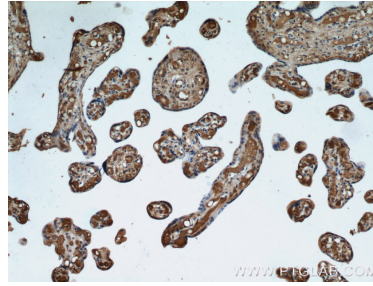
W: ptgcn.com

This product is exclusively available under Proteintech Group brand and is not available to purchase from any other manufacturer.

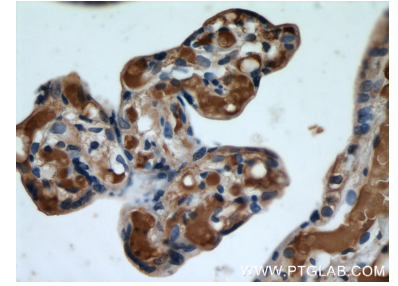
Selected Validation Data



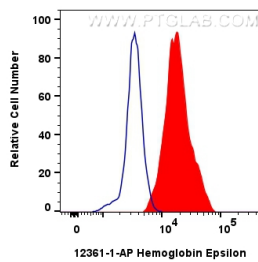
human placenta tissue were subjected to SDS PAGE followed by western blot with 12361-1-AP (Hemoglobin epsilon antibody) at dilution of 1:1000 incubated at room temperature for 1.5 hours.



Immunohistochemical analysis of paraffin-embedded human placenta using 12361-1-AP (Hemoglobin epsilon antibody) at dilution of 1:50 (under 10x lens).



Immunohistochemical analysis of paraffin-embedded human placenta using 12361-1-AP (Hemoglobin epsilon antibody) at dilution of 1:50 (under 40x lens).



1×10^6 K-562 cells were intracellularly stained with 0.4 ug Anti-Human Hemoglobin Epsilon (12361-1-AP)(red), or 0.4 ug Rabbit IgG control Rabbit PolyAb (30000-0-AP) (blue). Cells were fixed with 4% PFA and permeabilized with Flow Cytometry Perm Buffer (PF00011-C).