

For Research Use Only

UCHL3 Polyclonal antibody

Catalog Number:12384-1-AP

Featured Product

15 Publications



Basic Information

Catalog Number:

12384-1-AP

Size:

500 µg/ml

Source:

Rabbit

Isotype:

IgG

Immunogen Catalog Number:

AG3053

GenBank Accession Number:

BC018125

GeneID (NCBI):

7347

UNIPROT ID:

P15374

Full Name:

ubiquitin carboxyl-terminal esterase

L3 (ubiquitin thiolesterase)

Calculated MW:

26 kDa

Observed MW:

26 kDa

Purification Method:

Antigen affinity purification

Recommended Dilutions:

WB 1:1000-1:6000

IP 0.5-4.0 µg for 1.0-3.0 mg of total protein lysate

IHC 1:20-1:200

Applications

Tested Applications:

WB, IP, IHC, ELISA

Cited Applications:

WB, IHC, IF, IP, CoIP

Species Specificity:

human, mouse, rat

Cited Species:

human, mouse

Note-IHC: suggested antigen retrieval with TE buffer pH 9.0; (*) Alternatively, antigen retrieval may be performed with citrate buffer pH 6.0

Positive Controls:

WB : HeLa cells, rat spleen tissue, Jurkat cells

IP : HeLa cells,

IHC : human pancreas cancer tissue,

Background Information

UCH-L3 belongs to the ubiquitin C-terminal hydrolase family that deubiquitinates ubiquitin-protein conjugates in the ubiquitin-proteasome system. This enzyme indirectly increases the phosphorylation of IGF1R, AKT, FOXO1 and promotes insulin-signaling and insulin-induced adipogenesis. It is required for stress-response retinal, skeletal muscle and germ cell maintenance and may be involved in working memory.

Notable Publications

Author	Pubmed ID	Journal	Application
Zhiwang Song	31598398	Am J Cancer Res	WB,IHC
Christian Grethe	36216817	Nat Commun	WB
Qian Lei	32606430	Sci Rep	WB

Storage

Storage:

Store at -20°C. Stable for one year after shipment.

Storage Buffer:

PBS with 0.02% sodium azide and 50% glycerol pH 7.3.

Aliquoting is unnecessary for -20°C storage

For technical support and original validation data for this product please contact:

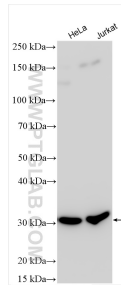
T: 4006900926

E: Proteintech-CN@ptglab.com

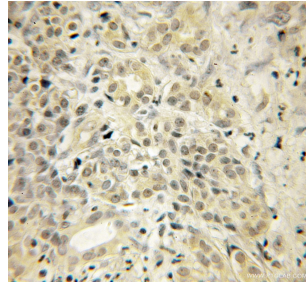
W: ptgcn.com

This product is exclusively available under Proteintech Group brand and is not available to purchase from any other manufacturer.

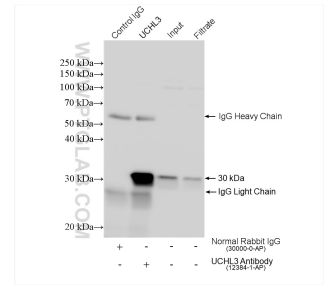
Selected Validation Data



Various lysates were subjected to SDS PAGE followed by western blot with 12384-1-AP (UCL3 antibody) at dilution of 1:3000 incubated at room temperature for 1.5 hours.



Immunohistochemical analysis of paraffin-embedded human pancreas cancer using 12384-1-AP (UCL3 antibody) at dilution of 1:50 (under 10x lens).



IP result of anti-UCL3 (IP:12384-1-AP, 4ug; Detection:12384-1-AP 1:3000) with HeLa cells lysate 1320 ug.