

For Research Use Only

COPG Polyclonal antibody

Catalog Number: 12393-1-AP **5 Publications**



Basic Information

Catalog Number:

12393-1-AP

Size:

350 µg/ml

Source:

Rabbit

Isotype:

IgG

Immunogen Catalog Number:

AG3070

GenBank Accession Number:

BC020498

GeneID (NCBI):

22820

UNIPROT ID:

Q9Y678

Full Name:

coatomer protein complex, subunit gamma

Calculated MW:

874 aa, 98 kDa

Observed MW:

98 kDa

Purification Method:

Antigen affinity purification

Recommended Dilutions:

WB 1:1000-1:5000

IP 0.5-4.0 µg for 1.0-3.0 mg of total protein lysate

IHC 1:20-1:200

IF 1:10-1:100

Applications

Tested Applications:

IF/ICC, IHC, IP, WB, ELISA

Cited Applications:

WB, IP, IF

Species Specificity:

human, mouse, rat

Cited Species:

human, mouse

Note-IHC: suggested antigen retrieval with TE buffer pH 9.0; (*) Alternatively, antigen retrieval may be performed with citrate buffer pH 6.0

Positive Controls:

WB: K-562 cells, A375 cells, HeLa cells, human brain tissue, human colon tissue, NIH/3T3 cells

IP: K-562 cells,

IHC: human breast cancer tissue,

IF: HepG2 cells, NIH/3T3 cells, HeLa cells

Background Information

Notable Publications

Author	Pubmed ID	Journal	Application
Mara C Harwood	36662862	Sci Adv	IP,IF,WB
Desiree M Baron	30806671	Hum Mol Genet	WB
Xiaoling Li	29475944	J Biol Chem	WB

Storage

Storage:

Store at -20°C. Stable for one year after shipment.

Storage Buffer:

PBS with 0.02% sodium azide and 50% glycerol pH 7.3.

Aliquoting is unnecessary for -20°C storage

For technical support and original validation data for this product please contact:

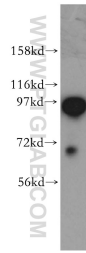
T: 4006900926

E: Proteintech-CN@ptglab.com

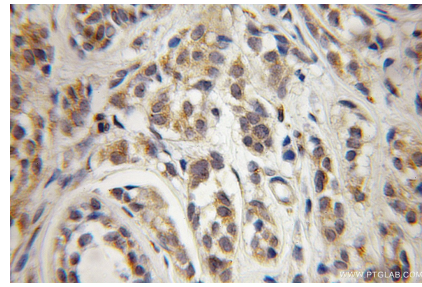
W: ptgcn.com

This product is exclusively available under Proteintech Group brand and is not available to purchase from any other manufacturer.

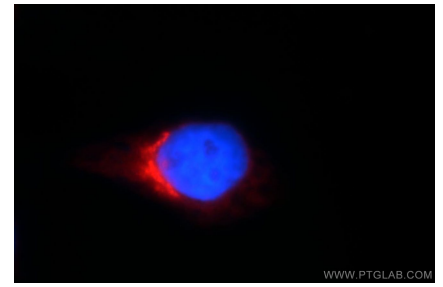
Selected Validation Data



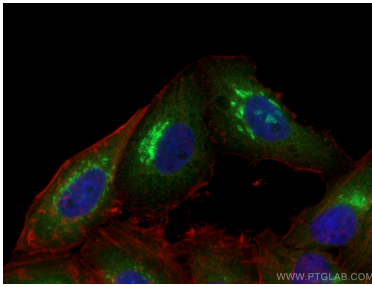
K-562 cells were subjected to SDS PAGE followed by western blot with 12393-1-AP (COPG antibody) at dilution of 1:500 incubated at room temperature for 1.5 hours.



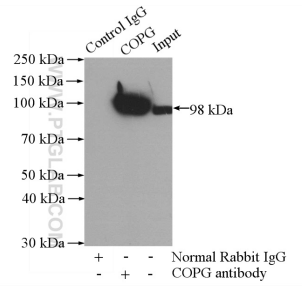
Immunohistochemical analysis of paraffin-embedded human breast cancer using 12393-1-AP (COPG antibody) at dilution of 1:50 (under 10x lens).



Immunofluorescent analysis of HepG2 cells, using COPG antibody 12393-1-AP at 1:25 dilution and Rhodamine-labeled goat anti-rabbit IgG (red). Blue pseudocolor = DAPI (fluorescent DNA dye).



Immunofluorescent analysis of (4% PFA) fixed HepG2 cells using COPG antibody (12393-1-AP) at dilution of 1:200 and CoraLite®488-Conjugated AffiniPure Goat Anti-Rabbit IgG(H+L), CL594-Phalloidin (red).



IP result of anti-COPG (IP:12393-1-AP, 4ug; Detection:12393-1-AP 1:2000) with K-562 cells lysate 3600ug.