

For Research Use Only

Septin 10 Polyclonal antibody

Catalog Number: 12420-1-AP



Basic Information

Catalog Number: 12420-1-AP	GenBank Accession Number: BC020502	Purification Method: Antigen affinity purification
Size: 400 µg/ml	GeneID (NCBI): 151011	Recommended Dilutions: WB 1:500-1:1000 IHC 1:20-1:200 IF/ICC 1:50-1:500
Source: Rabbit	UNIPROT ID: Q9POV9	
Isotype: IgG	Full Name: septin 10	
Immunogen Catalog Number: AG3071	Calculated MW: 53 kDa, 57 kDa	
	Observed MW: 53-57 kDa	

Applications

Tested Applications:
WB, IHC, IF/ICC, ELISA

Species Specificity:
human, mouse, rat

Note-IHC: suggested antigen retrieval with TE buffer pH 9.0; (*) Alternatively, antigen retrieval may be performed with citrate buffer pH 6.0

Positive Controls:

WB : human kidney tissue, HeLa cells

IHC : human pancreas cancer tissue,

IF/ICC : HepG2 cells,

Background Information

Storage

Storage:
Store at -20°C. Stable for one year after shipment.
Storage Buffer:
PBS with 0.02% sodium azide and 50% glycerol pH 7.3.
Aliquoting is unnecessary for -20°C storage

For technical support and original validation data for this product please contact:

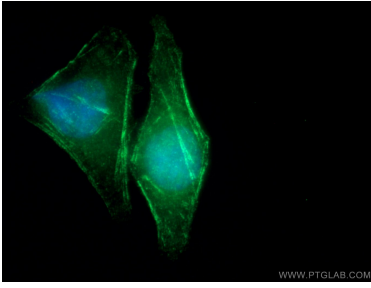
T: 4006900926

E: Proteintech-CN@ptglab.com

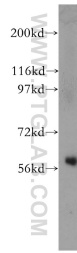
W: ptgcn.com

This product is exclusively available under Proteintech Group brand and is not available to purchase from any other manufacturer.

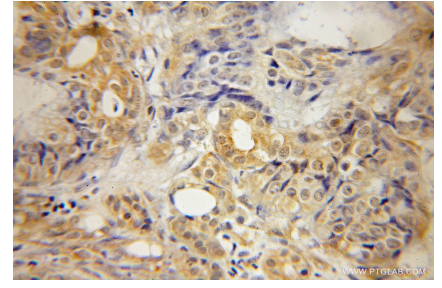
Selected Validation Data



Immunofluorescent analysis of (-20°C Ethanol) fixed HepG2 cells using 12420-1-AP (Septin 10 antibody) at dilution of 1:50 and Alexa Fluor 488-conjugated AffiniPure Goat Anti-Rabbit IgG(H+L).



human kidney tissue were subjected to SDS PAGE followed by western blot with 12420-1-AP (Septin 10 antibody) at dilution of 1:800 incubated at room temperature for 1.5 hours.



Immunohistochemical analysis of paraffin-embedded human pancreas cancer using 12420-1-AP (Septin 10 antibody) at dilution of 1:50 (under 10x lens).