

For Research Use Only

# GLYCTK Polyclonal antibody

Catalog Number: 12426-1-AP



## Basic Information

<b>Catalog Number:</b> 12426-1-AP	<b>GenBank Accession Number:</b> BC021896	<b>Purification Method:</b> Antigen affinity purification
<b>Size:</b> 400 µg/ml	<b>GeneID (NCBI):</b> 132158	<b>Recommended Dilutions:</b> WB 1:1000-1:4000 IHC 1:20-1:200 IF/ICC 1:200-1:800
<b>Source:</b> Rabbit	<b>UNIPROT ID:</b> Q8IVS8	
<b>Isotype:</b> IgG	<b>Full Name:</b> glycerate kinase	
<b>Immunogen Catalog Number:</b> AG3097	<b>Calculated MW:</b> 523 aa, 55 kDa	
	<b>Observed MW:</b> 55 kDa	

## Applications

**Tested Applications:**  
WB, IHC, IF/ICC, ELISA

**Species Specificity:**  
human, mouse, rat

**Note-IHC: suggested antigen retrieval with TE buffer pH 9.0; (\*) Alternatively, antigen retrieval may be performed with citrate buffer pH 6.0**

**Positive Controls:**

WB : human lung tissue, human liver tissue

IHC : human pancreas cancer tissue,

IF/ICC : HeLa cells,

## Background Information

### Storage

**Storage:**  
Store at -20°C. Stable for one year after shipment.  
**Storage Buffer:**  
PBS with 0.02% sodium azide and 50% glycerol pH 7.3.  
Aliquoting is unnecessary for -20°C storage

For technical support and original validation data for this product please contact:

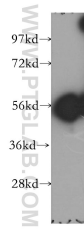
T: 4006900926

E: Proteintech-CN@ptglab.com

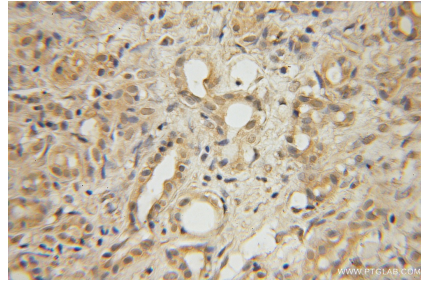
W: ptgcn.com

This product is exclusively available under Proteintech Group brand and is not available to purchase from any other manufacturer.

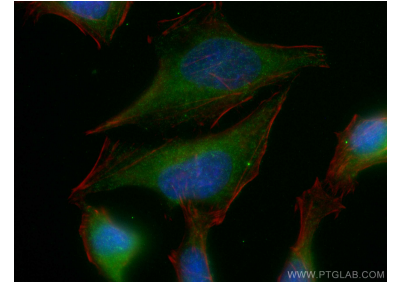
## Selected Validation Data



human lung tissue were subjected to SDS PAGE followed by western blot with 12426-1-AP (GLYCK antibody) at dilution of 1:400 incubated at room temperature for 1.5 hours.



Immunohistochemical analysis of paraffin-embedded human pancreas cancer using 12426-1-AP (GLYCK antibody) at dilution of 1:50 (under 10x lens).



Immunofluorescent analysis of (-20°C Ethanol) fixed HeLa cells using GLYCK antibody (12426-1-AP) at dilution of 1:400 and Coralite®488-Conjugated AffiniPure Goat Anti-Rabbit IgG(H+L), CL594-Phalloidin (red).