

For Research Use Only

SHPK Polyclonal antibody

Catalog Number: 12441-1-AP



Basic Information

Catalog Number: 12441-1-AP	GenBank Accession Number: BC020543	Purification Method: Antigen affinity purification
Size: 500 µg/ml	GeneID (NCBI): 23729	Recommended Dilutions: WB 1:500-1:1000 IHC 1:20-1:200
Source: Rabbit	UNIPROT ID: Q9UJH6	
Isotype: IgG	Full Name: sedoheptulokinase	
Immunogen Catalog Number: AG3150	Calculated MW: 478 aa, 52 kDa	
	Observed MW: 52 kDa	

Applications

Tested Applications:

IHC, WB, ELISA

Species Specificity:

human, mouse, rat

Note-IHC: suggested antigen retrieval with TE buffer pH 9.0; (*) Alternatively, antigen retrieval may be performed with citrate buffer pH 6.0

Positive Controls:

WB : MDA-MB-231 cells, RAW 264.7 cells, mouse heart tissue

IHC : human prostate cancer tissue,

Background Information

SHPK, also named CARKL, is a carbohydrate kinase involved in the phosphorylation of sugars as they enter a cell, inhibiting return across the cell membrane (PubMed: 10673275). SHPK is a sedoheptulose kinase of the pentose phosphate pathway. It acts as a modulator of macrophage activation through control of glucose metabolism (PMID: 22682222).

Storage

Storage:

Store at -20°C. Stable for one year after shipment.

Storage Buffer:

PBS with 0.02% sodium azide and 50% glycerol pH 7.3.

Aliquoting is unnecessary for -20°C storage

For technical support and original validation data for this product please contact:

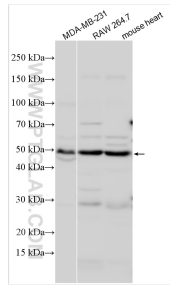
T: 4006900926

E: Proteintech-CN@ptglab.com

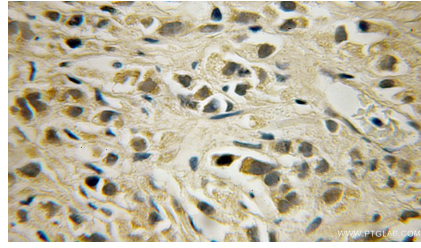
W: ptgcn.com

This product is exclusively available under Proteintech Group brand and is not available to purchase from any other manufacturer.

Selected Validation Data



Various lysates were subjected to SDS PAGE followed by western blot with 12441-1-AP (SHPK antibody) at dilution of 1:800 incubated at room temperature for 1.5 hours.



Immunohistochemical analysis of paraffin-embedded human prostate cancer using 12441-1-AP (SHPK antibody) at dilution of 1:50 (under 10x lens).