

For Research Use Only

TCEB1 Polyclonal antibody

Catalog Number: 12450-1-AP **5 Publications**



Basic Information

Catalog Number: 12450-1-AP	GenBank Accession Number: BC013809	Purification Method: Antigen affinity purification
Size: 600 µg/ml	GeneID (NCBI): 6921	Recommended Dilutions: WB 1:2000-1:12000
Source: Rabbit	UNIPROT ID: Q15369	IHC 1:50-1:500 IF 1:200-1:800
Isotype: IgG	Full Name: transcription elongation factor B (SIII), polypeptide 1 (15kDa, elongin C)	
Immunogen Catalog Number: AG3087	Calculated MW: 112 aa, 12 kDa	
	Observed MW: 12 kDa	

Applications

Tested Applications: IF, IHC, WB, ELISA	Positive Controls:
Cited Applications: WB, IF, IHC	WB: HeLa cells, MCF-7 cells, mouse testis tissue, rat testis tissue
Species Specificity: human, mouse, rat	IHC: human breast cancer tissue, human ovary tumor tissue
Cited Species: human, rat	IF: HeLa cells,

Note-IHC: suggested antigen retrieval with TE buffer pH 9.0; (*) Alternatively, antigen retrieval may be performed with citrate buffer pH 6.0

Background Information

TCEB1, also named as RNA polymerase II transcription factor SIII subunit C, belongs to the SKP1 family. It mediates the ubiquitination of ECS-E3 ubiquitin-protein ligase complexes. TCEB1 is overexpressed in prostate cancer cell line PC-3 and breast cancer cell line SK-BR-3. TCEB1 also promotes invasion of prostate cancer cells (PMID:18844214).

Notable Publications

Author	Pubmed ID	Journal	Application
Chong-Chong Guo	26557149	Evid Based Complement Alternat Med	WB
Pingzhao Zhang	34743205	Cell Death Differ	WB
Mingchao Mu	37816999	Cell Death Differ	WB,IF

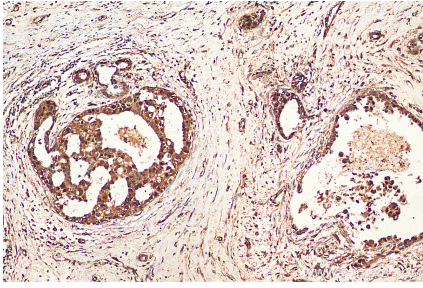
Storage

Storage:
Store at -20°C. Stable for one year after shipment.
Storage Buffer:
PBS with 0.02% sodium azide and 50% glycerol pH 7.3.
Aliquoting is unnecessary for -20°C storage

For technical support and original validation data for this product please contact:
T: 4006900926 E: Proteintech-CN@ptglab.com W: ptgcn.com

This product is exclusively available under Proteintech Group brand and is not available to purchase from any other manufacturer.

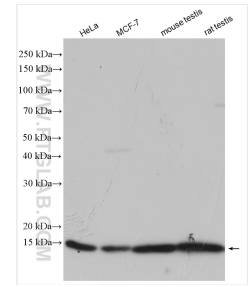
Selected Validation Data



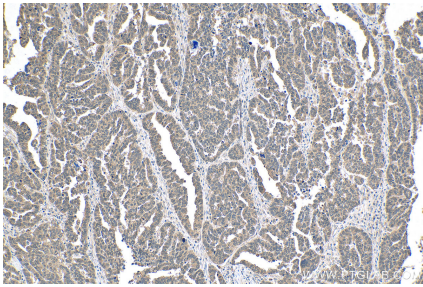
Immunohistochemical analysis of paraffin-embedded human breast cancer tissue slide using 12450-1-AP (TCEB1 antibody) at dilution of 1:200 (under 10x lens). Heat mediated antigen retrieval with Tris-EDTA buffer (pH 9.0).



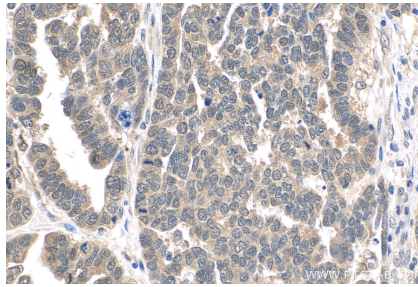
Immunofluorescent analysis of (4% PFA) fixed HeLa cells using TCEB1 antibody (12450-1-AP) at dilution of 1:400 and CoraLite®488-Conjugated AffiniPure Goat Anti-Rabbit IgG(H+L).



Various lysates were subjected to SDS PAGE followed by western blot with 12450-1-AP (TCEB1 antibody) at dilution of 1:6000 incubated at room temperature for 1.5 hours.



Immunohistochemical analysis of paraffin-embedded human ovary tumor tissue slide using 12450-1-AP (TCEB1 antibody) at dilution of 1:200 (under 10x lens). Heat mediated antigen retrieval with Tris-EDTA buffer (pH 9.0).



Immunohistochemical analysis of paraffin-embedded human ovary tumor tissue slide using 12450-1-AP (TCEB1 antibody) at dilution of 1:200 (under 40x lens). Heat mediated antigen retrieval with Tris-EDTA buffer (pH 9.0).