

For Research Use Only

PPP1R1A Polyclonal antibody

Catalog Number:12461-1-AP



Basic Information

Catalog Number: 12461-1-AP	GenBank Accession Number: BC022470	Purification Method: Antigen affinity purification
Size: 500 ug/ml	GeneID (NCBI): 5502	Recommended Dilutions: WB 1:500-1:1000
Source: Rabbit	UNIPROT ID: Q13522	
Isotype: IgG	Full Name: protein phosphatase 1, regulatory (inhibitor) subunit 1A	
Immunogen Catalog Number: AG3128	Calculated MW: 171 aa, 19 kDa	
	Observed MW: 15-18 kDa	

Applications

Tested Applications: WB, ELISA	Positive Controls: WB : HeLa cells, MCF-7 cells, PC-12 cells
Species Specificity: human, rat	

Background Information

PPP1R1A, also known as protein phosphatase 1 regulatory subunit 1A, is a gene that plays a crucial role in regulating the activity of protein phosphatase 1 (PP1). As an inhibitor, PPP1R1A binds to PP1, preventing the dephosphorylation of PP1 to other proteins. This gene influences a broad range of cellular functions by maintaining the phosphorylation of specific proteins and is directly involved in glycogen metabolism, cardiac contractility, and cell proliferation. PPP1R1A is considered a key factor in regulating cellular signaling and physiological homeostasis.

Storage

Storage:
Store at -20°C. Stable for one year after shipment.
Storage Buffer:
PBS with 0.02% sodium azide and 50% glycerol pH 7.3.
Aliquoting is unnecessary for -20°C storage

For technical support and original validation data for this product please contact:

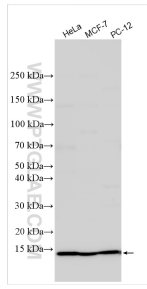
T: 4006900926

E: Proteintech-CN@ptglab.com

W: ptgcn.com

This product is exclusively available under Proteintech Group brand and is not available to purchase from any other manufacturer.

Selected Validation Data



Various lysates were subjected to SDS PAGE followed by western blot with 12461-1-AP (PPP1R1A antibody) at dilution of 1:500 incubated at room temperature for 1.5 hours.