

For Research Use Only

RECQL5 Polyclonal antibody

Catalog Number: 12468-2-AP



Basic Information

Catalog Number: 12468-2-AP	GenBank Accession Number: BC016911	Purification Method: Antigen affinity purification
Size: 550 µg/ml	GeneID (NCBI): 9400	Recommended Dilutions: WB 1:1000-1:4000
Source: Rabbit	UNIPROT ID: O94762	IHC 1:20-1:200
Isotype: IgG	Full Name: RecQ protein-like 5	IF/ICC 1:20-1:200
Immunogen Catalog Number: AG3145	Calculated MW: 435 aa, 49 kDa, 409 kDa	
	Observed MW: 48 kDa, 130-140 kDa	

Applications

Tested Applications:
WB, IHC, IF/ICC, ELISA

Species Specificity:
human, mouse, rat

Note-IHC: suggested antigen retrieval with TE buffer pH 9.0; (*) Alternatively, antigen retrieval may be performed with citrate buffer pH 6.0

Positive Controls:

WB : HEK-293T cells, mouse testis tissue

IHC : human pancreas cancer tissue,

IF/ICC : HepG2 cells,

Background Information

Storage

Storage:
Store at -20°C. Stable for one year after shipment.

Storage Buffer:
PBS with 0.02% sodium azide and 50% glycerol pH 7.3.

Aliquoting is unnecessary for -20°C storage

For technical support and original validation data for this product please contact:

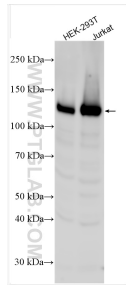
T: 4006900926

E: Proteintech-CN@ptglab.com

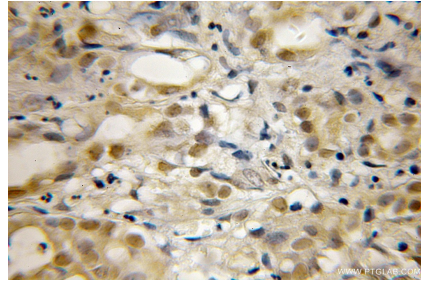
W: ptgcn.com

This product is exclusively available under Proteintech Group brand and is not available to purchase from any other manufacturer.

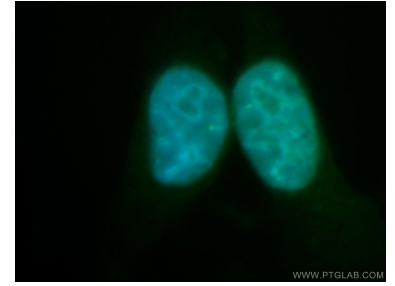
Selected Validation Data



Various lysates were subjected to SDS PAGE followed by western blot with 12468-2-AP (RECQL5 antibody) at dilution of 1:2000 incubated at room temperature for 1.5 hours.



Immunohistochemical analysis of paraffin-embedded human pancreas cancer using 12468-2-AP (RECQL5 antibody) at dilution of 1:50 (under 10x lens).



Immunofluorescent analysis of HepG2 cells, using RECQL5 antibody 12468-2-AP at 1:100 dilution and FITC-labeled donkey anti-rabbit IgG (green). Blue pseudocolor = DAPI (fluorescent DNA dye).