

For Research Use Only

# TRUB1 Polyclonal antibody

Catalog Number: 12520-1-AP **2 Publications**



## Basic Information

**Catalog Number:**

12520-1-AP

**Size:**

200 µg/ml

**Source:**

Rabbit

**Isotype:**

IgG

**Immunogen Catalog Number:**

AG3213

**GenBank Accession Number:**

BC030601

**GeneID (NCBI):**

142940

**UNIPROT ID:**

Q8WWH5

**Full Name:**

TruB pseudouridine (psi) synthase homolog 1 (E. coli)

**Calculated MW:**

349 aa, 37 kDa

**Observed MW:**

37 kDa

**Purification Method:**

Antigen affinity purification

**Recommended Dilutions:**

WB 1:1000-1:4000

IP 0.5-4.0 µg for 1.0-3.0 mg of total protein lysate

IHC 1:50-1:500

## Applications

**Tested Applications:**

IHC, IP, WB, ELISA

**Cited Applications:**

WB, IF

**Species Specificity:**

human, mouse

**Cited Species:**

human

**Positive Controls:**

WB : HEK-293T cells, HepG2 cells

IP : mouse liver tissue,

IHC : human kidney tissue, mouse testis tissue

**Note-IHC: suggested antigen retrieval with TE buffer pH 9.0; (\*) Alternatively, antigen retrieval may be performed with citrate buffer pH 6.0**

## Background Information

TRUB1 gene encodes a 349-amino acid product, with a VFAVHKPKGPTSA box in positions 71-83 corresponding to motif I of the TruB family (probably involved in conserving protein structure). This protein may be responsible for synthesis of pseudouridine from uracil in transfer RNAs.

## Notable Publications

| Author            | Pubmed ID | Journal           | Application |
|-------------------|-----------|-------------------|-------------|
| Xin Fang          | 38709875  | Nucleic Acids Res | WB          |
| Oleksandra Fanari | 38585714  | bioRxiv           | IF          |

## Storage

**Storage:**

Store at -20°C. Stable for one year after shipment.

**Storage Buffer:**

PBS with 0.02% sodium azide and 50% glycerol pH 7.3.

Aliquoting is unnecessary for -20°C storage

For technical support and original validation data for this product please contact:

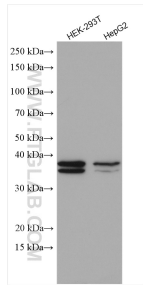
T: 4006900926

E: Proteintech-CN@ptglab.com

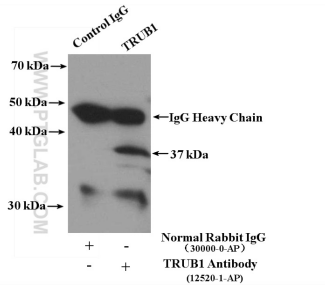
W: ptgcn.com

**This product is exclusively available under Proteintech Group brand and is not available to purchase from any other manufacturer.**

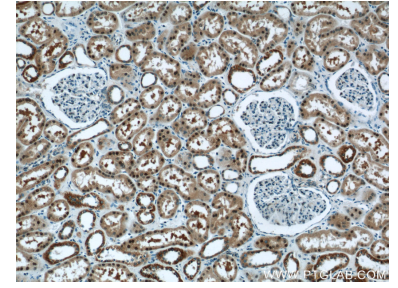
## Selected Validation Data



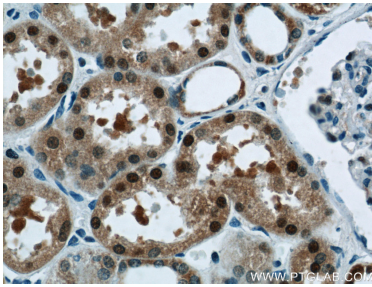
Various lysates were subjected to SDS PAGE followed by western blot with 12520-1-AP (TRUB1 antibody) at dilution of 1:2000 incubated at room temperature for 1.5 hours.



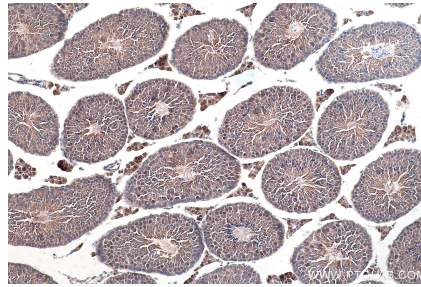
IP result of anti-TRUB1 (IP:12520-1-AP, 4ug; Detection:12520-1-AP 1:300) with mouse liver tissue lysate 6400ug.



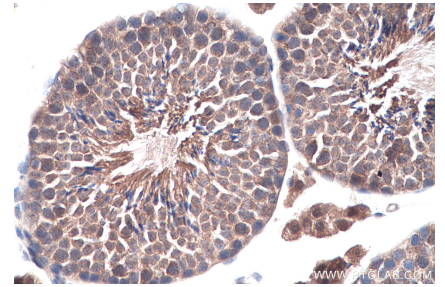
Immunohistochemical analysis of paraffin-embedded human kidney tissue slide using 12520-1-AP (TRUB1 Antibody) at dilution of 1:50 (under 10x lens).



Immunohistochemical analysis of paraffin-embedded human kidney tissue slide using 12520-1-AP (TRUB1 Antibody) at dilution of 1:50 (under 40x lens).



Immunohistochemical analysis of paraffin-embedded mouse testis tissue slide using 12520-1-AP (TRUB1 antibody) at dilution of 1:500 (under 10x lens). Heat mediated antigen retrieval with Tris-EDTA buffer (pH 9.0).



Immunohistochemical analysis of paraffin-embedded mouse testis tissue slide using 12520-1-AP (TRUB1 antibody) at dilution of 1:500 (under 40x lens). Heat mediated antigen retrieval with Tris-EDTA buffer (pH 9.0).