

For Research Use Only

# TSP50 Polyclonal antibody

Catalog Number: 12574-1-AP

Featured Product

4 Publications



## Basic Information

**Catalog Number:**

12574-1-AP

**Size:**

400 µg/ml

**Source:**

Rabbit

**Isotype:**

IgG

**Immunogen Catalog Number:**

AG3247

**GenBank Accession Number:**

BC033016

**GeneID (NCBI):**

29122

**UNIPROT ID:**

Q9UI38

**Full Name:**

testes-specific protease 50

**Calculated MW:**

385 aa, 43 kDa

**Observed MW:**

50-55 kDa

**Purification Method:**

Antigen affinity purification

**Recommended Dilutions:**

WB 1:500-1:2400

IHC 1:20-1:200

IF/ICC 1:10-1:100

## Applications

**Tested Applications:**

WB, IHC, IF/ICC, ELISA

**Cited Applications:**

WB, IHC

**Species Specificity:**

human, mouse

**Cited Species:**

human

**Note-IHC: suggested antigen retrieval with TE buffer pH 9.0; (\*) Alternatively, antigen retrieval may be performed with citrate buffer pH 6.0**

**Positive Controls:**

**WB:** MCF7 cells, HEK-293 cells, human testis tissue, MCF-7 cells, mouse testis tissue

**IHC:** human ovary tumor tissue, human breast cancer tissue, human testis tissue

**IF/ICC:** MCF-7 cells,

## Background Information

TSP50 (Testis-specific protease-like protein 50) is also named as PR550, CT20 and belongs to the peptidase S1 family. It can enhance the expression of NFκB target genes involved in cell proliferation, and promotes cell proliferation, at least partially, through activation of the NFκB signalling pathway (PMID:21385156). There are two protein bands of 37 kDa and 43 kDa to be detected in human testes that the difference is most likely caused by posttranslational proteolytic cleavage (PMID:11782390). The full length protein has a signal peptide with 39 amino acids and two glycosylation sites.

## Notable Publications

Author	Pubmed ID	Journal	Application
Wen-Liang Qiao	29805619	Oncol Lett	IHC
Wen-Liang Qiao	27109614	Oncol Rep	
Qing-Hua Cao	29361914	BMC Cancer	WB,IHC

## Storage

**Storage:**

Store at -20°C. Stable for one year after shipment.

**Storage Buffer:**

PBS with 0.02% sodium azide and 50% glycerol pH 7.3.

Aliquoting is unnecessary for -20°C storage

For technical support and original validation data for this product please contact:

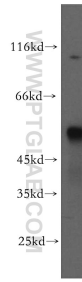
T: 4006900926

E: Proteintech-CN@ptglab.com

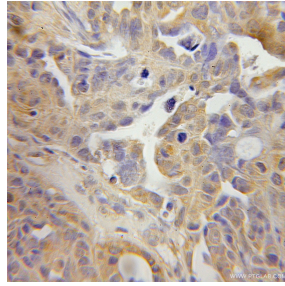
W: ptgcn.com

**This product is exclusively available under Proteintech Group brand and is not available to purchase from any other manufacturer.**

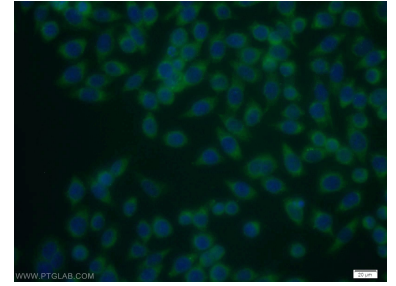
## Selected Validation Data



MCF7 cells were subjected to SDS PAGE followed by western blot with 12574-1-AP (TSP50 antibody) at dilution of 1:300 incubated at room temperature for 1.5 hours.



Immunohistochemical analysis of paraffin-embedded human ovary tumor using 12574-1-AP (TSP50 antibody) at dilution of 1:50 (under 10x lens).



Immunofluorescent analysis of MCF-7 cells using 12574-1-AP (TSP50 antibody) at dilution of 1:25 and Alexa Fluor 488-conjugated AffiniPure Goat Anti-Rabbit IgG(H+L).