

For Research Use Only

PTTG1IP Polyclonal antibody

Catalog Number: 12575-1-AP **3 Publications**



Basic Information

Catalog Number:

12575-1-AP

Size:

300 µg/ml

Source:

Rabbit

Isotype:

IgG

Immunogen Catalog Number:

AG3250

GenBank Accession Number:

BC012858

GeneID (NCBI):

754

UNIPROT ID:

P53801

Full Name:

pituitary tumor-transforming 1 interacting protein

Calculated MW:

180 aa, 20 kDa

Observed MW:

26 kDa

Purification Method:

Antigen affinity purification

Recommended Dilutions:

WB 1:500-1:1000

IP 0.5-4.0 µg for 1.0-3.0 mg of total protein lysate

IHC 1:20-1:200

IF/ICC 1:50-1:500

Applications

Tested Applications:

WB, IHC, IF/ICC, IP, ELISA

Cited Applications:

WB, IHC

Species Specificity:

human

Cited Species:

human

Note-IHC: suggested antigen retrieval with TE buffer pH 9.0; (*) Alternatively, antigen retrieval may be performed with citrate buffer pH 6.0

Positive Controls:

WB : A375 cells, HEK-293 cells, HeLa cells

IP : HEK-293 cells,

IHC : human testis tissue, human colon tissue, human liver tissue

IF/ICC : HeLa cells, PC-3 cells

Background Information

Notable Publications

Author	Pubmed ID	Journal	Application
Wang Zhen	28472828	Horm Metab Res	WB
Tian Zhang	29435035	Oncol Lett	IHC
Wenfang Bao	37689128	Pharmacol Res	WB

Storage

Storage:

Store at -20°C. Stable for one year after shipment.

Storage Buffer:

PBS with 0.02% sodium azide and 50% glycerol pH 7.3.

Aliquoting is unnecessary for -20°C storage

For technical support and original validation data for this product please contact:

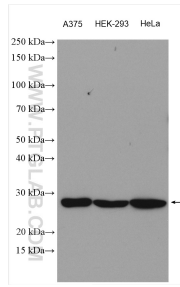
T: 4006900926

E: Proteintech-CN@ptglab.com

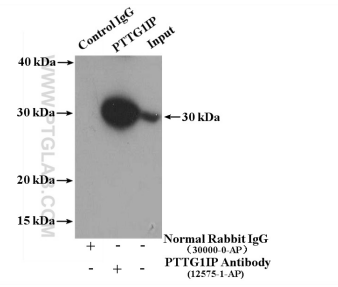
W: ptgcn.com

This product is exclusively available under Proteintech Group brand and is not available to purchase from any other manufacturer.

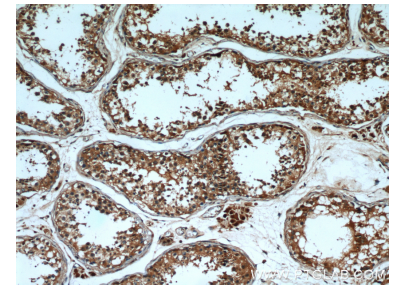
Selected Validation Data



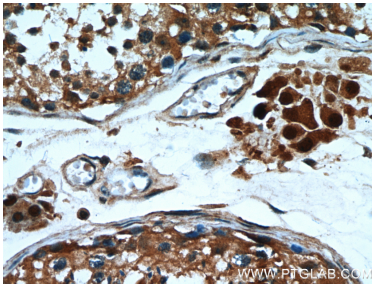
Various lysates were subjected to SDS PAGE followed by western blot with 12575-1-AP (PTTG1P antibody) at dilution of 1:500 incubated at room temperature for 1.5 hours.



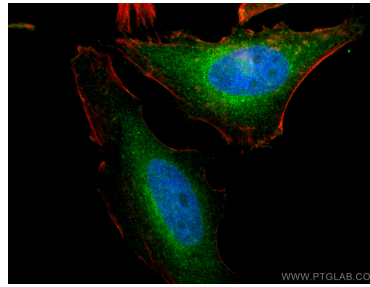
IP result of anti-PTTG1P (IP:12575-1-AP, 4ug; Detection:12575-1-AP 1:300) with HEK-293 cells lysate 2600 ug.



Immunohistochemical analysis of paraffin-embedded human testis using 12575-1-AP (PTTG1P antibody) at dilution of 1:50 (under 10x lens).



Immunohistochemical analysis of paraffin-embedded human testis using 12575-1-AP (PTTG1P antibody) at dilution of 1:50 (under 40x lens).



Immunofluorescent analysis of (4% PFA) fixed HeLa cells using PTTG1P antibody (12575-1-AP) at dilution of 1:200 and CoraLite@488-Conjugated AffiniPure Goat Anti-Rabbit IgG(H+L), CL594-Phalloidin (red).