

For Research Use Only

# RBBP8 Polyclonal antibody

Catalog Number: 12624-1-AP

Featured Product

3 Publications



## Basic Information

|  |   |  |
|--|---|--|
| <b>Catalog Number:</b><br>12624-1-AP       | <b>GenBank Accession Number:</b><br>BC030590          | <b>Purification Method:</b><br>Antigen affinity purification |
| <b>Size:</b><br>260 µg/ml                  | <b>GeneID (NCBI):</b><br>5932                         | <b>Recommended Dilutions:</b><br>WB 1:500-1:1000             |
| <b>Source:</b><br>Rabbit                   | <b>UNIPROT ID:</b><br>Q99708                          |  |
| <b>Isotype:</b><br>IgG                     | <b>Full Name:</b><br>retinoblastoma binding protein 8 |  |
| <b>Immunogen Catalog Number:</b><br>AG3314 | <b>Calculated MW:</b><br>103 kDa                      |  |
|  | <b>Observed MW:</b><br>120 kDa                        |  |

## Applications

|   |  |
|---|--|
| <b>Tested Applications:</b><br>WB, ELISA    | <b>Positive Controls:</b><br>WB : Raji cells, A431 cells |
| <b>Cited Applications:</b><br>WB            |  |
| <b>Species Specificity:</b><br>human, mouse |  |
| <b>Cited Species:</b><br>human              |  |

## Background Information

RBBP8 is an endonuclease that cooperates with the MRE11-RAD50-NBN (MRN) complex in processing meiotic and mitotic double-strand breaks (DSBs) by ensuring both resection and intrachromosomal association of the broken ends. It functions downstream of the MRN complex and ATM, promotes ATR activation and its recruitment to DSBs in the S/G2 phase facilitating the generation of ssDNA. It interacted with BRCA1 to form a complex that regulates CHEK1 activation and controls cell cycle G2/M checkpoints on DNA damage. Also it promotes microhomology-mediated alternative end joining (A-NHEJ) during class-switch recombination and plays an essential role in chromosomal translocations

## Notable Publications

| Author     | Pubmed ID | Journal            | Application |
|------------|-----------|--------------------|-------------|
| Yang Yu    | 31636387  | Oncogene           | WB          |
| Lei Yang   | 31418900  | Cell Biochem Funct | WB          |
| Guoling Li | 38007480  | Cell Biosci        | WB          |

## Storage

**Storage:**  
Store at -20°C. Stable for one year after shipment.  
**Storage Buffer:**  
PBS with 0.02% sodium azide and 50% glycerol pH 7.3.  
Aliquoting is unnecessary for -20°C storage

For technical support and original validation data for this product please contact:

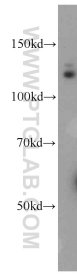
T: 4006900926

E: [Proteintech-CN@ptglab.com](mailto:Proteintech-CN@ptglab.com)

W: [ptgcn.com](http://ptgcn.com)

**This product is exclusively available under Proteintech Group brand and is not available to purchase from any other manufacturer.**

## Selected Validation Data



Raji cells were subjected to SDS PAGE followed by western blot with 12624-1-AP (RBBP8 antibody) at dilution of 1:600 incubated at room temperature for 1.5 hours.