

For Research Use Only

# Synaptotagmin-4 Polyclonal antibody



Catalog Number: 12642-1-AP

2 Publications

## Basic Information

<b>Catalog Number:</b> 12642-1-AP	<b>GenBank Accession Number:</b> BC036538	<b>Purification Method:</b> Antigen affinity purification
<b>Size:</b> 500 µg/ml	<b>GeneID (NCBI):</b> 6860	<b>Recommended Dilutions:</b> WB 1:500-1:2000 IHC 1:20-1:200
<b>Source:</b> Rabbit	<b>UNIPROT ID:</b> Q9H2B2	
<b>Isotype:</b> IgG	<b>Full Name:</b> synaptotagmin IV	
<b>Immunogen Catalog Number:</b> AG3338	<b>Calculated MW:</b> 425 aa, 48 kDa	
	<b>Observed MW:</b> 48 kDa	

## Applications

<b>Tested Applications:</b> IHC, WB, ELISA	<b>Positive Controls:</b> WB : human brain tissue, IHC : human gliomas tissue,
<b>Cited Applications:</b> WB, IHC	
<b>Species Specificity:</b> human, mouse, rat	
<b>Cited Species:</b> human	
<b>Note-IHC: suggested antigen retrieval with TE buffer pH 9.0; (*) Alternatively, antigen retrieval may be performed with citrate buffer pH 6.0</b>	

## Background Information

### Notable Publications

Author	Pubmed ID	Journal	Application
Shinji Kudoh	32170367	Histochem Cell Biol	IHC
Yidan Xu	37172727	J Biol Chem	WB

## Storage

**Storage:**  
Store at -20°C. Stable for one year after shipment.  
**Storage Buffer:**  
PBS with 0.02% sodium azide and 50% glycerol pH 7.3.  
Aliquoting is unnecessary for -20°C storage

For technical support and original validation data for this product please contact:

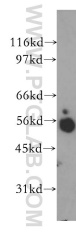
T: 4006900926

E: Proteintech-CN@ptglab.com

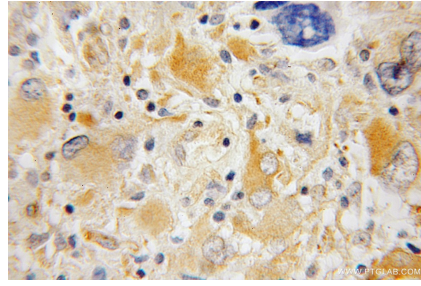
W: ptgcn.com

This product is exclusively available under Proteintech Group brand and is not available to purchase from any other manufacturer.

## Selected Validation Data



human brain tissue were subjected to SDS PAGE followed by western blot with 12642-1-AP (Synaptotagmin-4 antibody) at dilution of 1:400 incubated at room temperature for 1.5 hours.



Immunohistochemical analysis of paraffin-embedded human gliomas using 12642-1-AP (Synaptotagmin-4 antibody) at dilution of 1:100 (under 10x lens).