

For Research Use Only

# Kir7.1 Polyclonal antibody

Catalog Number: 12657-1-AP **1 Publications**



## Basic Information

<b>Catalog Number:</b> 12657-1-AP	<b>GenBank Accession Number:</b> BC037290	<b>Purification Method:</b> Antigen affinity purification
<b>Size:</b> 550 µg/ml	<b>GeneID (NCBI):</b> 3769	<b>Recommended Dilutions:</b> WB 1:200-1:1000 IHC 1:20-1:200
<b>Source:</b> Rabbit	<b>UNIPROT ID:</b> O60928	
<b>Isotype:</b> IgG	<b>Full Name:</b> potassium inwardly-rectifying channel, subfamily J, member 13	
<b>Immunogen Catalog Number:</b> AG3327	<b>Calculated MW:</b> 360 aa, 43 kDa	
	<b>Observed MW:</b> 43 kDa	

## Applications

<b>Tested Applications:</b> IHC, WB, ELISA	<b>Positive Controls:</b> WB : human brain tissue, human kidney tissue IHC : human small intestine tissue,
<b>Cited Applications:</b> IHC	
<b>Species Specificity:</b> human	
<b>Cited Species:</b> human	
<b>Note-IHC: suggested antigen retrieval with TE buffer pH 9.0; (*) Alternatively, antigen retrieval may be performed with citrate buffer pH 6.0</b>	

## Background Information

Kir7.1, encoded by KCNJ13 gene, is a member of the inwardly rectifying potassium channel family of proteins. Kir7.1 is a low-conductance channel. At mRNA level, Kir7.1 is predominantly expressed in small intestine and also expressed in stomach, kidney, and brain. Mutations in KCNJ13 gene are associated with snowflake vitreoretinal degeneration.

## Notable Publications

Author	Pubmed ID	Journal	Application
Shishuai Wen	34693452	Acta Biochim Biophys Sin (Shanghai)	IHC

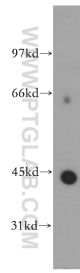
## Storage

**Storage:**  
Store at -20°C. Stable for one year after shipment.  
**Storage Buffer:**  
PBS with 0.02% sodium azide and 50% glycerol pH 7.3.  
Aliquoting is unnecessary for -20°C storage

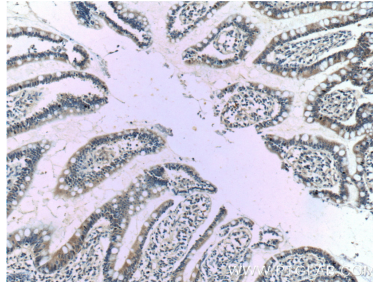
For technical support and original validation data for this product please contact:  
T: 4006900926 E: Proteintech-CN@ptglab.com W: ptgcn.com

This product is exclusively available under Proteintech Group brand and is not available to purchase from any other manufacturer.

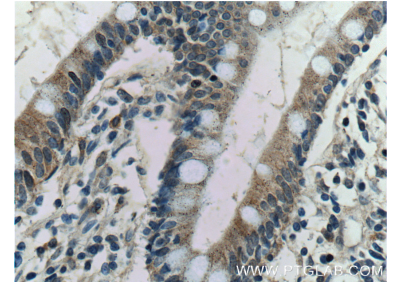
## Selected Validation Data



human brain tissue were subjected to SDS PAGE followed by western blot with 12657-1-AP (Kir7.1 antibody) at dilution of 1:300 incubated at room temperature for 1.5 hours.



Immunohistochemical analysis of paraffin-embedded human small intestine tissue slide using 12657-1-AP (Kir7.1 antibody at dilution of 1:50 (under 10x lens).



Immunohistochemical analysis of paraffin-embedded human small intestine tissue slide using 12657-1-AP (Kir7.1 antibody at dilution of 1:50 (under 40x lens).