

For Research Use Only

COG8 Polyclonal antibody

Catalog Number: 12661-1-AP **1 Publications**



Basic Information

Catalog Number: 12661-1-AP	GenBank Accession Number: BC017492	Purification Method: Antigen affinity purification
Size: 700 ug/ml	GeneID (NCBI): 84342	Recommended Dilutions: WB 1:500-1:3000 IHC 1:50-1:500 IF/ICC 1:50-1:500
Source: Rabbit	UNIPROT ID: Q96MW5	
Isotype: IgG	Full Name: component of oligomeric golgi complex 8	
Immunogen Catalog Number: AG3341	Calculated MW: 612 aa, 68 kDa	
	Observed MW: 68 kDa	

Applications

Tested Applications: WB, IHC, IF/ICC, ELISA	Positive Controls: WB : HeLa cells, HepG2 cells, MCF-7 cells, Raji cells IHC : human ovary cancer tissue, IF/ICC : A431 cells,
Cited Applications: WB	
Species Specificity: human, mouse, rat	
Cited Species: human	
Note-IHC: suggested antigen retrieval with TE buffer pH 9.0; (*) Alternatively, antigen retrieval may be performed with citrate buffer pH 6.0	

Background Information

The conserved oligomeric Golgi (COG) complex is an eight subunit (COG1-8) peripheral Golgi membrane hetero-oligomeric protein complex. The COG complex is organized into lobes A (COG2-4) and B (COG5-7) with COG1 and COG8 bridging these lobes and is thought to play a critical role in vesicle tethering processes (PMID: 17331980). Cog8 localizes exclusively in the Golgi apparatus and is involved in the retrograde Golgi transport of resident proteins responsible for sugar chain (glycan) biosynthesis (PMID: 17220172).

Notable Publications

Author	Pubmed ID	Journal	Application
Xihua Yue	34876695	Commun Biol	WB

Storage

Storage:
Store at -20°C. Stable for one year after shipment.
Storage Buffer:
PBS with 0.02% sodium azide and 50% glycerol pH 7.3.
Aliquoting is unnecessary for -20°C storage

For technical support and original validation data for this product please contact:

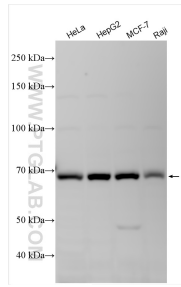
T: 4006900926

E: Proteintech-CN@ptglab.com

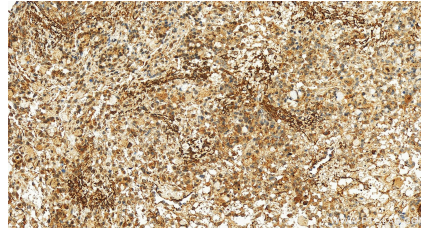
W: ptgcn.com

This product is exclusively available under Proteintech Group brand and is not available to purchase from any other manufacturer.

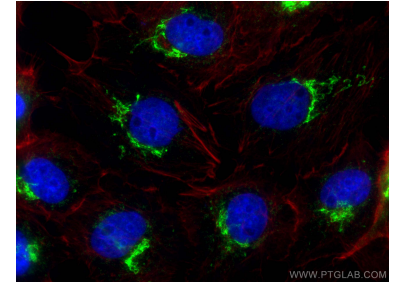
Selected Validation Data



Various lysates were subjected to SDS PAGE followed by western blot with 12661-1-AP (COG8 antibody) at dilution of 1:1500 incubated at room temperature for 1.5 hours.



Immunohistochemical analysis of paraffin-embedded human ovary cancer tissue slide using 12661-1-AP (COG8 antibody) at dilution of 1:200 (under 20x lens). Heat mediated antigen retrieval with Tris-EDTA buffer (pH 9.0).



Immunofluorescent analysis of (4% PFA) fixed A431 cells using COG8 antibody (12661-1-AP) at dilution of 1:200 and CoraLite®488-Conjugated AffiniPure Goat Anti-Rabbit IgG(H+L) (SA00013-2), CL594-phalloidin (red).