

For Research Use Only

BBS3 Polyclonal antibody

Catalog Number: 12676-1-AP

Featured Product

9 Publications



Basic Information

Catalog Number:

12676-1-AP

Size:

400 µg/ml

Source:

Rabbit

Isotype:

IgG

Immunogen Catalog Number:

AG3363

GenBank Accession Number:

BC024239

GeneID (NCBI):

84100

UNIPROT ID:

Q9H0F7

Full Name:

ADP-ribosylation factor-like 6

Calculated MW:

186 aa, 21 kDa

Observed MW:

21 kDa

Purification Method:

Antigen affinity purification

Recommended Dilutions:

WB 1:500-1:2000

IP 0.5-4.0 µg for 1.0-3.0 mg of total protein lysate

IHC 1:50-1:500

IF 1:20-1:200

Applications

Tested Applications:

IF/ICC, IHC, IP, WB, ELISA

Cited Applications:

WB, IF, IHC

Species Specificity:

human, mouse, rat, canine

Cited Species:

human, mouse

Note-IHC: suggested antigen retrieval with TE buffer pH 9.0; (*) Alternatively, antigen retrieval may be performed with citrate buffer pH 6.0

Positive Controls:

WB : rat brain tissue, HEK-293T cells, human brain tissue, mouse brain tissue

IP : rat brain tissue,

IHC : human kidney tissue,

IF : hTERT-RPE1 cells, MDCK cells

Background Information

ADP-ribosylation factor-like protein 6 (ARL6), belongs to a small GTPase superfamily, is involved in membrane protein trafficking at the base of the ciliary organelle. ARL6 is also named Bardet-Biedl syndrome 3 protein, because defects in ARL6 are a cause of Bardet-Biedl syndrome type 3 (BBS3), which is a genetically heterogeneous disorder characterized by usually severe pigmentary retinopathy, early onset obesity, polydactyly, hypogenitalism, renal malformation and mental retardation. ARL6 can interact with many ARL6 interacting proteins and form BBSome complex with other BBS proteins including BBS1, BBS2, BBS4 and so on.

Notable Publications

Author	Pubmed ID	Journal	Application
Ying Hsu	29049287	PLoS Genet	WB
Shichao Duan	33241915	EMBO J	WB,IF
Minati Singh	31072410	Mol Brain	WB

Storage

Storage:

Store at -20°C. Stable for one year after shipment.

Storage Buffer:

PBS with 0.02% sodium azide and 50% glycerol pH 7.3.

Aliquoting is unnecessary for -20°C storage

For technical support and original validation data for this product please contact:

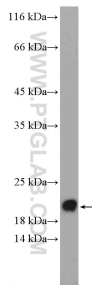
T: 4006900926

E: Proteintech-CN@ptglab.com

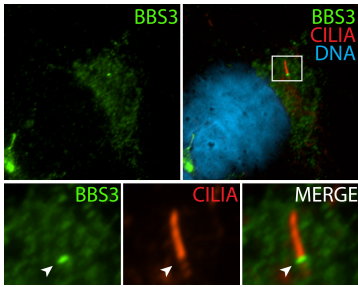
W: ptgcn.com

This product is exclusively available under Proteintech Group brand and is not available to purchase from any other manufacturer.

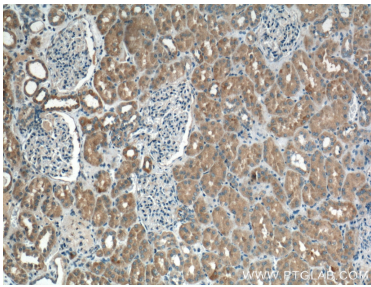
Selected Validation Data



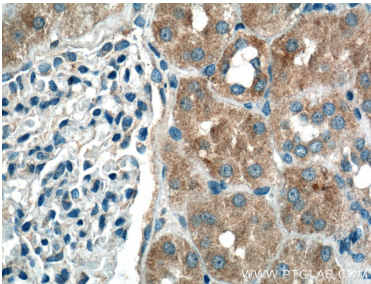
rat brain tissue were subjected to SDS PAGE followed by western blot with 12676-1-AP (BBS3 Antibody) at dilution of 1:1000 incubated at room temperature for 1.5 hours.



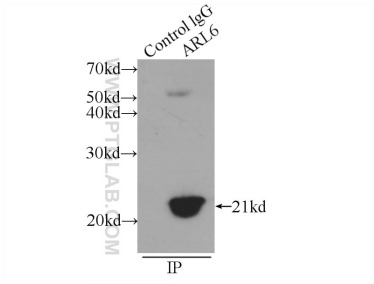
IF result (cytoplasm and the base of cilia stain) of anti-BBS3 (12676-1-AP; 1:50) with hTERT-RPE1 cell (MeOH fixed) by Dr. Moshe Kim.



Immunohistochemical analysis of paraffin-embedded human kidney tissue slide using 12676-1-AP (BBS3 Antibody) at dilution of 1:200 (under 10x lens).



Immunohistochemical analysis of paraffin-embedded human kidney tissue slide using 12676-1-AP (BBS3 Antibody) at dilution of 1:200 (under 40x lens).



IP result of anti-BBS3 (IP:12676-1-AP, 3ug; Detection:12676-1-AP 1:600) with rat brain tissue lysate 5200ug.