

For Research Use Only

BHLHE41 Polyclonal antibody

Catalog Number: 12688-1-AP **10 Publications**



Basic Information

Catalog Number: 12688-1-AP	GenBank Accession Number: BC025968	Purification Method: Antigen affinity purification
Size: 550 µg/ml	GeneID (NCBI): 79365	Recommended Dilutions: WB 1:1000-1:4000 IF/ICC 1:50-1:500
Source: Rabbit	UNIPROT ID: Q9C0J9	
Isotype: IgG	Full Name: basic helix-loop-helix family, member e41	
Immunogen Catalog Number: AG3381	Calculated MW: 482 aa, 51 kDa	
	Observed MW: 48-50 kDa	

Applications

Tested Applications: WB, IF/ICC, ELISA	Positive Controls: WB : mouse testis tissue, IF/ICC : A431 cells,
Cited Applications: WB, IHC, IF, IP, ChIP	
Species Specificity: human, mouse, rat	
Cited Species: human, mouse, rat	

Background Information

BHLHE41 (basic helix-loop-helix family member e41), also called SHARP1 and DEC2, is a member of the BHLH family proteins that are involved in differentiation, circadian rhythms and the response to hypoxia. In esophageal, osteosarcomas, prostate, breast, and endometrial cancer cells, BHLHE41 functions as an anti-apoptotic factor and promotes cell proliferation and invasiveness. It suppresses cell proliferation and metastasis, and also facilitates pancreatic as well as gastric cancer cell apoptosis. BHLHE41 has an important role in the proliferation of glioblastoma and could serve as a novel candidate for targeted therapy of glioblastoma (PMID: 31616182).

Notable Publications

Author	Pubmed ID	Journal	Application
Tianpeng Zhang	30555544	Theranostics	IP
Xiao Yang	33990215	J Exp Clin Cancer Res	WB, IHC
Annette Schröder	31984552	FASEB J	WB

Storage

Storage:
Store at -20°C. Stable for one year after shipment.
Storage Buffer:
PBS with 0.02% sodium azide and 50% glycerol pH 7.3.
Aliquoting is unnecessary for -20°C storage

For technical support and original validation data for this product please contact:

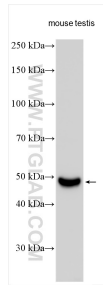
T: 4006900926

E: Proteintech-CN@ptglab.com

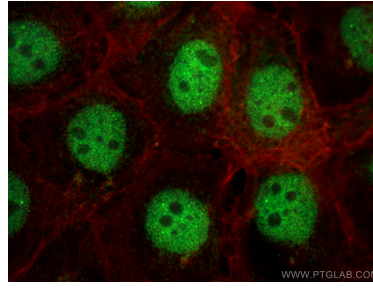
W: ptgcn.com

This product is exclusively available under Proteintech Group brand and is not available to purchase from any other manufacturer.

Selected Validation Data



mouse testis tissue were subjected to SDS PAGE followed by western blot with 12688-1-AP (BHLHE41 antibody) at dilution of 1:2000 incubated at room temperature for 1.5 hours.



Immunofluorescent analysis of (4% PFA) fixed A431 cells using BHLHE41 antibody (12688-1-AP) at dilution of 1:200 and Multi-rAb CoraLite® Plus 488-Goat Anti-Rabbit Recombinant Secondary Antibody (H+L) (RGAR002), CL594-Phalloidin (red).